

Prometheus Mobile Rounds and Inspection

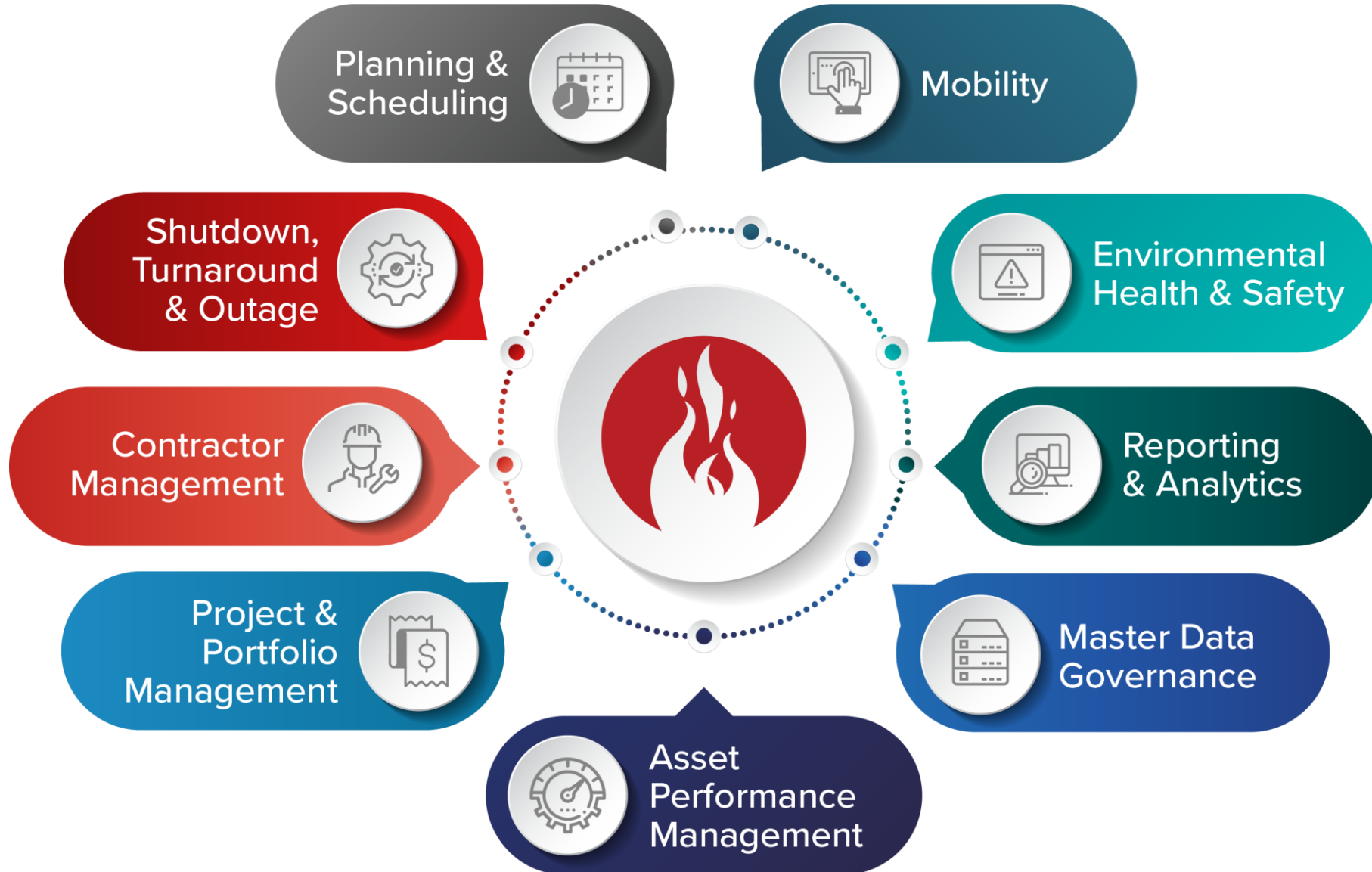
Juan Lopez, Sr. Functional Consultant

April 19th, 2023

Agenda

- Digitization: Where To Start?
 - Primary focus
 - Additional considerations
- Building Your Rounds
- Analyze the Process

The Prometheus Platform



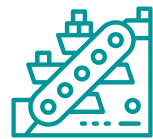
Prometheus Group

- Founded in 1998
- Headquartered in Raleigh, NC, USA
- 13 global offices
- Integrated and intuitive software
- Partnerships with industry leading companies



TOP 8

Oil & Gas



TOP 7

Mining & Metals



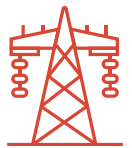
TOP 7

Pulp & Paper



TOP 6

Chemical



TOP 6

Utilities

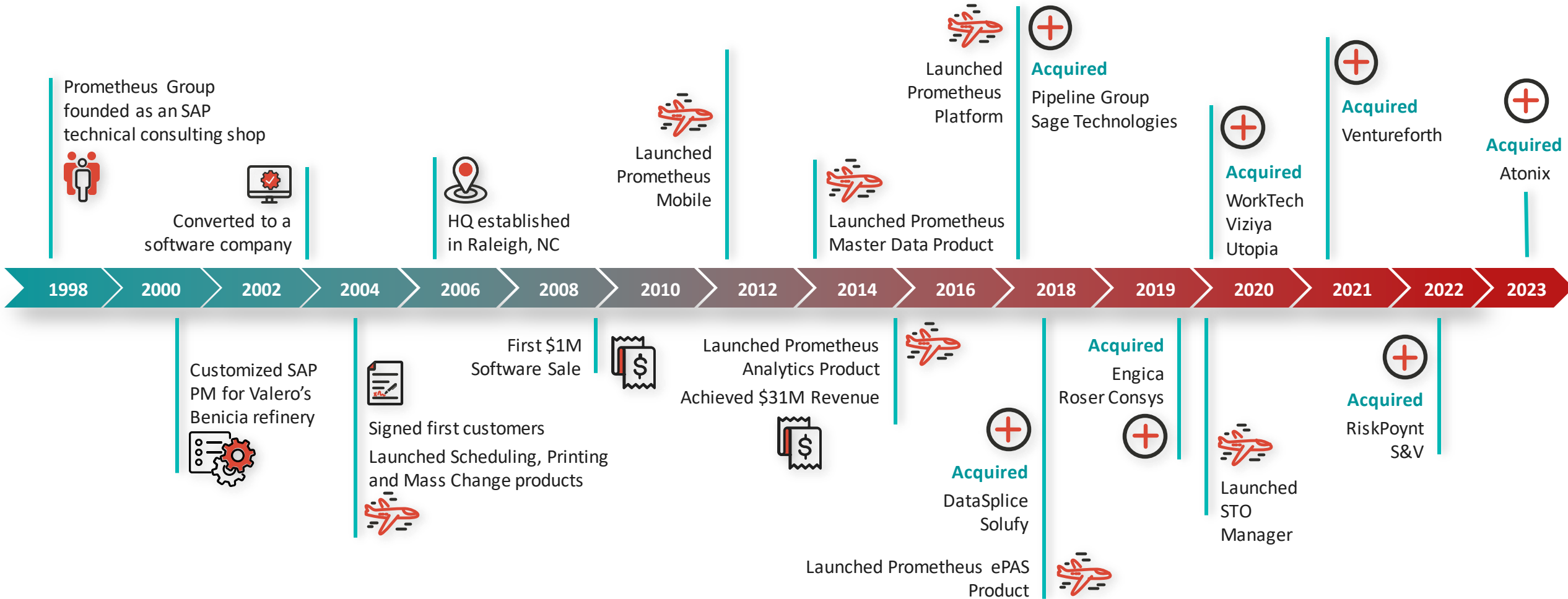
SAP® Certified
Integration with SAP® S/4HANA



ORACLE Gold Partner



The Prometheus Journey



Key Customers



Optimizing Your Operator Rounds Strategy

Where To Start?

- Digitization projects can appear daunting due to:
 - Lack of effective system of record use
 - Large number of paper-based processes and administrative tasks
 - Uncertainty about where to start – no structured plan in place
- There are simple approaches to manage the transition to a more digital process
- You're able to go at your own pace – it doesn't have to be all or nothing!

Digitization Efforts – Operator Rounds

- Break it down to identify the highest priority items
- What are the most performed items?
- Are there shared processes in place?
- Start to think about templates

Digitization Management

- Set reasonable timelines for the manageable selection of processes you've made
- Enlist help outside of your organization
- Anything worth doing in the long term is going to require effort and strategy



Building Your Library

- Start with your data control
 - How are you dividing responsibility?
 - Asset groups
 - Physical location
 - Type of work
 - Work Groups
 - Foundational organization will ease downstream efforts



Build Your Strategy

Building Your Strategy

- Consider alignment with PM schedules – Are there tasks that need to be completed alongside PM work?
- Leverage Data Groupings – Some examples:
 - Pre-use inspections for fleet management
 - Lubrication rounds
 - Fire extinguisher inspections
 - Processes that require certification and qualification management

The Foundation of Your Strategy

- Asset information
- Measurement Points
- Question Content
- Workflow Builds

The screenshot displays the 'Rounds' screen in the Prometheus Mobile application. The interface includes a red header with the title 'Rounds' and a search icon. Below the header, there are tabs for 'Results (8)' and 'Filter/Sort'. A search filter 'DP_ASSIGN' is active. The main content area lists five inspection rounds, each with a progress indicator, status, start date, due date, and plant name.

Round Name	Progress	Status	Start Date	Due Date	Plant
21 & 22 C Store Tank Lvl Alarm Func Test	Complete		04/19/2021 12:00 AM	04/19/2021 11:59 PM	1000 Werk Hamburg
Weekly Floor Inspection Rounds	Not Started	Active	04/06/2021 12:00 AM	04/05/2022 11:59 PM	1000 Werk Hamburg
CO2 Rounds	Not Started	Active	02/02/2021 12:00 AM	10/01/2021 11:00 PM	1000 Werk Hamburg
Material Handling Rounds	Not Started	Active	02/02/2021 12:00 AM	10/01/2021 11:00 PM	1000 Werk Hamburg
Force Deflection Method - Belt Drive					

The bottom navigation bar contains five icons: Home, Drafts, Pending, Recent, and Feed.

Structuring Your Rounds

- It's important to understand where information needs to be captured
 - Do certain readings need to be captured in your CMMS?
- Prometheus Operator Rounds create consistency when we need it, and flexibility when we don't
 - Example: Fire extinguisher rounds are incredibly important, but these assets do not need equipment records in SAP!

Asset Landscape

- Catalogues
- Asset Hierarchy – Think about items that already exist in SAP – Do we need history there?
- Master Data Elements

The screenshot displays the SAP Assets interface. The top navigation bar includes the 'Assets' logo and a user profile for Devin Peters (dpeters@prometheusgroup.com). Below the navigation bar, there are tabs for 'SAP Assets' and 'Local Assets'. The main content area is divided into two panels. The left panel shows a hierarchical tree structure of assets, including 'DP-B, Biological Cleaning', 'DP-B01, Pump Station', 'DP-B02, Filter Building', and 'DP-B-E1, Bio Service Water Main Line Valve'. The right panel shows a table of measurement points for the selected asset, with columns for 'Measuring Point', 'MP Description', 'Characteristic/Code Group', and 'Characteristic/Code Group Description'. The table contains three rows of data.

Measuring Point	MP Description	Characteristic/Code Group	Characteristic/Code Group Description
13757	Pump Total Run Time	OPERATION_HOURS_1	Operation hours: machines
13759	Pump Total Run Time	UT-OPH	Operating Hour Meter
13762		PRESSURE_LOSS_1	Loss of pressure: water filter

Measurement Points

- With or Without ERP integration
- Allows us to create historical reference, trending, and analysis
- Drive PM Compliance and trend towards more predictive maintenance practices

Prometheus Mobile

Question Summary

7 ALL 0 ANSWERED 7 INCOMPLETE 0 EXCEPTIONS

Search

No Asset

Shop Temperature DETAILS

Reading 62 °F

Acceptable value between 64 and 73 °F

Comments

Inform Area supervisor

3D Measurement

Is the pump running?

Spot Check FOD

SAVE SUBMIT

NEXT

Tie It Together

- Use calculations to ensure action is only taken when it's needed
- Actions and Workflows – You control the process, and the right people are reviewing any escalations
- ERP touchpoints – Notification and Work Requests – automated or manual

RELATIONSHIP BUILDER CONFIGS OVERRIDES ×

Shop Temperature

Relationship Builder
Please set up relationships here

Shop Temperature

Greater Than	73	Inform Supervisor and perform shutdown according to procedure.
Less Than	64	Inform Area supervisor

+ Add Multi-Expression

Section 3 – Analyze and Maintain

Getting The Most Out of Your Program

- There are benefits to a strong ERP integration – But only when you need it
 - Leverage:

Asset Hierarchy

- Consider which items are important for our asset history. Were any issues identified that need correction? Was or should work be completed?

Measurement Entry

- Measurement points are usually important for asset history (but not always) and can drive sophisticated PM schedules

PM Strategies and Schedules

- Align rounds with existing PM schedules

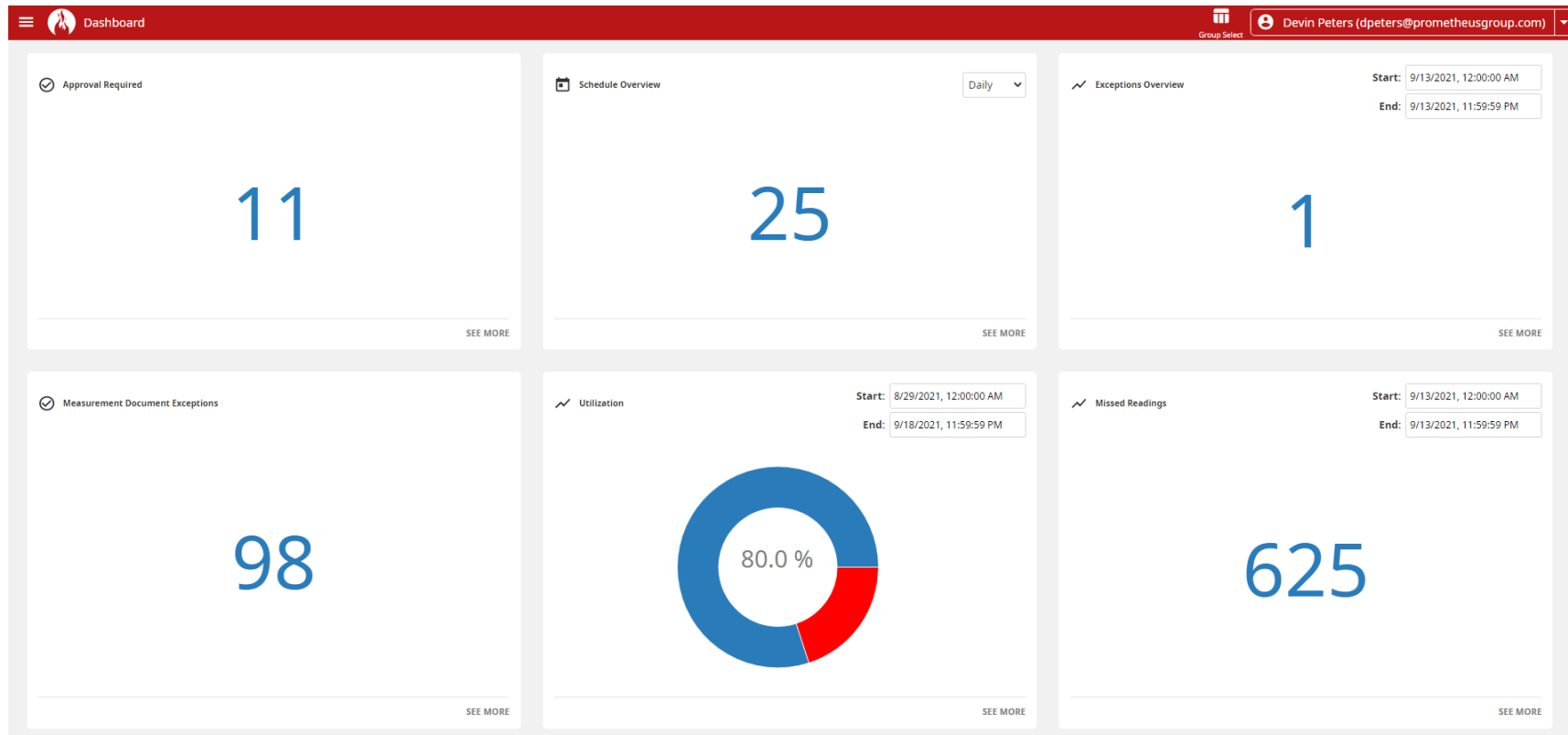
- Continued monitoring and easy to use systems should be in place to drive continuous improvement and the returns on asset health for which we are ultimately striving

Analyzing the Program

- Monitor and Improve the process with actionable insight
 - Are current processes leading to found work?
 - Are certain inspections required/necessary?
 - How often do measurement entries deviate from the expected?
 - How often are inputs missed?
 - The data we don't get is just as important as the data we do

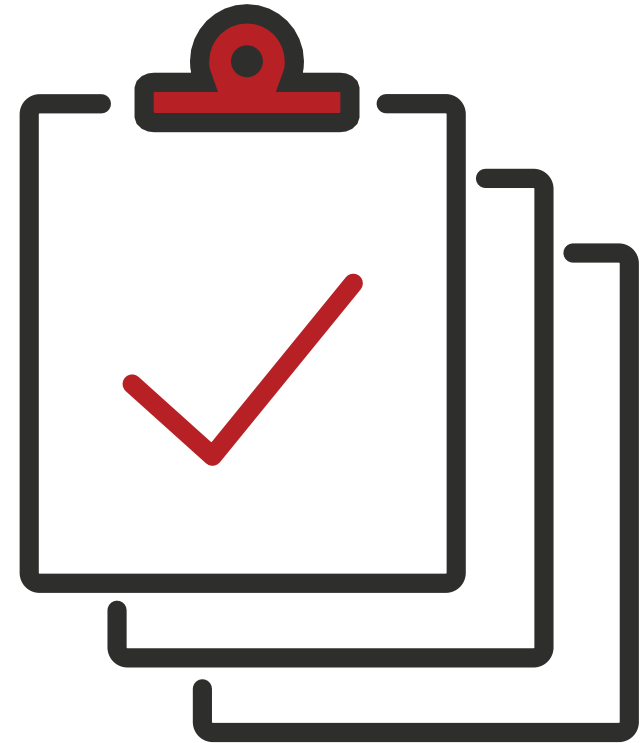
Getting The Most Out of Your Program

- Strategic and Targeted Dashboard Management



Additional Controls?

- Filling in the Gaps
 - Scanning at the asset location – avoid “pencil-whipping”
 - As-found image capture – attach photo and video records to a round, or to the notification/work request
 - Supervisory review and approval – add review when you need it and track how often items are escalated and adjust as needed. The process is not stagnant!



Thank you

Questions?

PROMETHEUS
GROUP | USER
CONFERENCE

Juan Lopez, Sr. Functional Consultant