

What's New With Prometheus ePAS

Sean McWhirter

- Former Reliability Engineer, Mechanical Systems at a Steel Mill
- Sr. Sales Engineer and ePAS Product Owner
 - 8 years in SAP PM and Safety Solutions

Agenda

- Industry Trends
- Project Practices
- New Development
- What's Next

Industry Trends

Industry Trends

- OSHA Enforcement guidance on Instance-by-instance citations
 - Higher citations with no violation grouping
<https://www.osha.gov/news/newsreleases/national/01262023-0>
- Top Citations in General Industry (FY 2022)
 - Fall Protection
 - Respiratory Protection
 - Scaffolding
 - LOTO
 - PPE
- Fatality rates and top 10 have been stagnant

Common Reasons for Citations/Incidents

- Lack of training
 - Personnel management
- Poor documentation or record keeping
 - Complete and searchable audit trail
- Procedural deficits
 - Standard requirements and notified review periods
- Hazard recognition and control failures
 - Library of requirements and positive verification

Workflow Designer

- eLogger
- Incident Reports
- MOCs
- ePAS 4 Forms

The top screenshot, titled 'Workflow Overview Permit To Work', displays a flowchart with states: Planning, Approvals, Ready For Issue, Issued, and Complete. A 'Configure State' dialog is open for the 'Planning' state, showing fields for Name, Description, Initial State, Type, and View Permission. A legend indicates that blue circles represent 'Default Transition' and blue diamonds represent 'Optional Transition'. Below the flowchart are buttons for 'Active', 'Atmospheric Testing', 'Delete', 'Incident Report', and 'Job Walkdown'. The bottom screenshot, titled 'State Layout Configuration PTW - Planning', shows a list of fields for the 'Planning' state, including 'Plant & Work', 'HIRA', 'Relationships', 'Documents', and 'Initial Atmospheric Testing'. It also shows a list of actions such as 'Applicant', 'Body Part Affected', 'Chemical Name', 'Date/Time of Incident', 'Does the incident require furt...', 'EHS Approval', 'EHS Professional Approval', 'EHS Signature', 'Employee Involved in Incident', 'Employee Reporting Incident', 'Explain issues that arose duri...', and 'Fire Watch'.

Project Impact

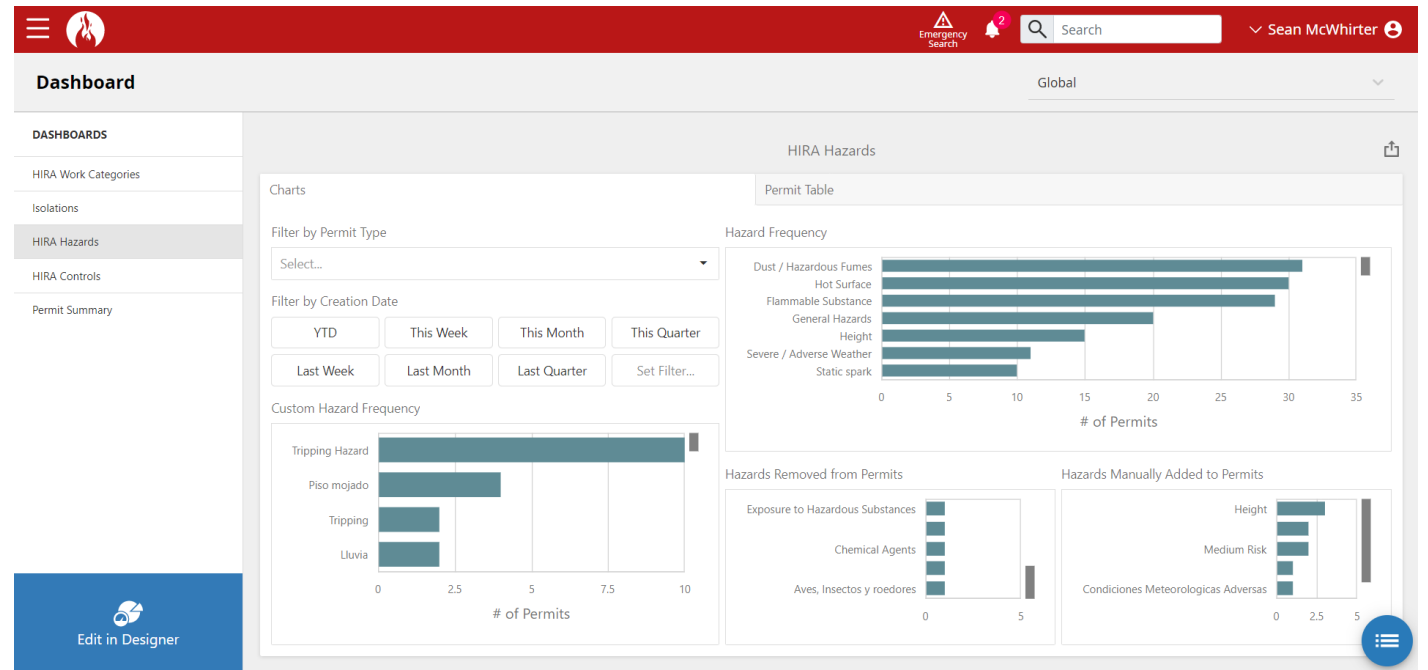
- Many new project types
 - Not just permit to work and LOTO
- Fit for purpose workflow application
 - Workflow designer and localized content
- Phased approach and change management



New Development

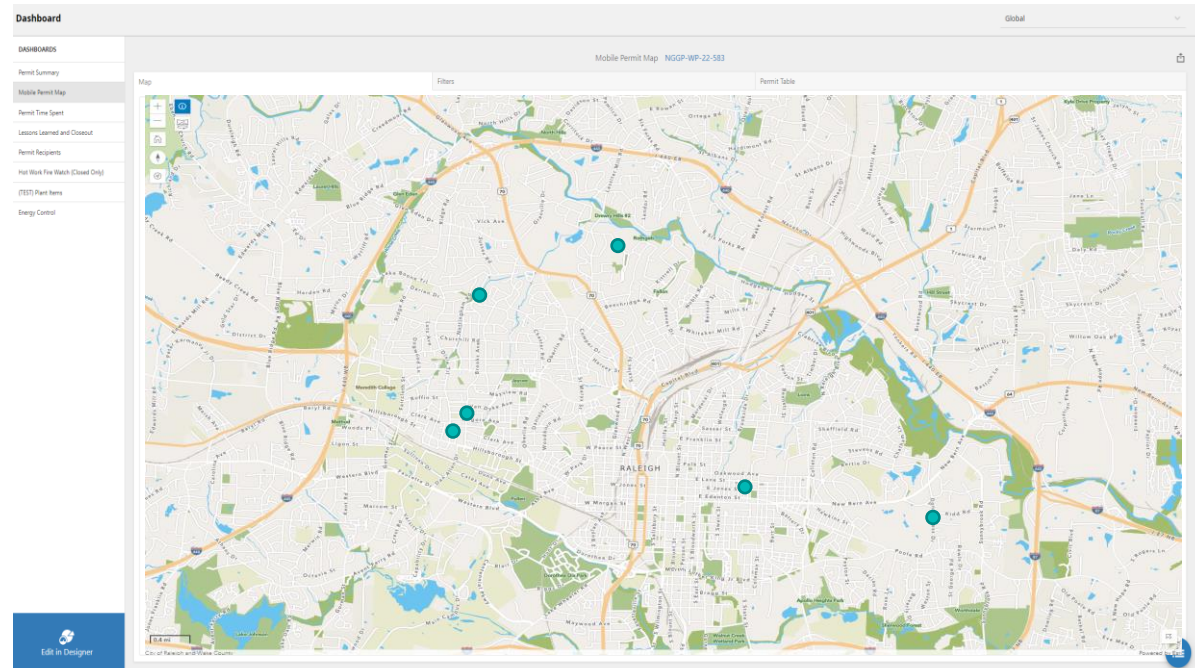
Embedded Reporting

- Dev Express Reports
 - No more crystal reports requirements
- In-app Analysis
- Map Extension
- Location and Role Dashboards



GIS Improvements

- Audit trail coordinates
- Mobile integration
- Automated spatial plotting



P&ID Mark-up

- Manage P&ID boundaries for LOTO
- Integrate P&ID mark-up within LOTO elements
- Visualize LOTO programs
- Manage templates

Maintain P&IDs

- Manage Drawings
- Pre-save Isolation Points
- View records

The screenshot displays a software interface for managing P&IDs. The top navigation bar includes a menu icon, a logo, an 'Emergency Search' button, a search input field, and a user profile for 'E5 Developer'. The main content area is titled 'maintain_p_and_ids' and features a table of records on the left, a central P&ID diagram, and a search panel on the right.

Name	Location
Cooling Water	Global
Gov Air Updated	Prometh

The central P&ID diagram shows two receiver tanks (#1 and #2) and a compressor (Comp #1). Several isolation points are highlighted in yellow, including valves 92A, 92B, 97B, 87A, and 87B. The diagram is annotated with technical specifications for these valves and transducers.

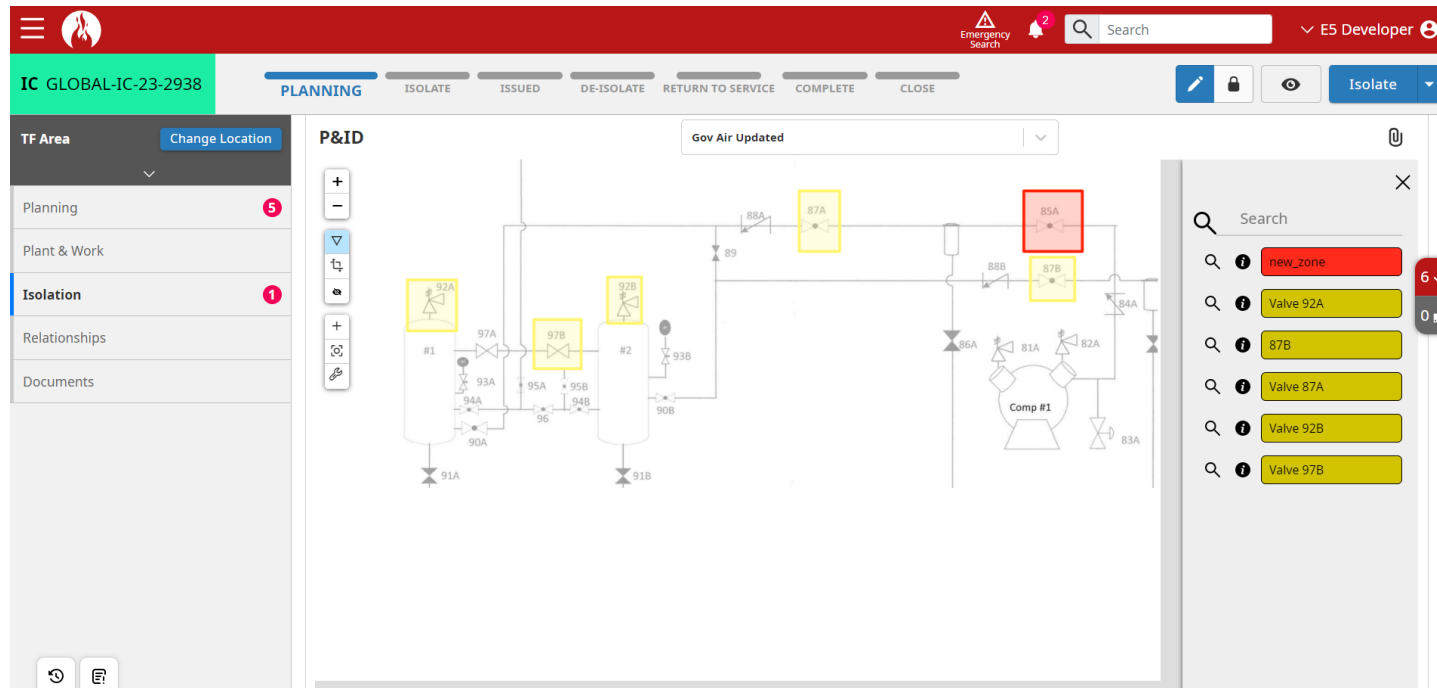
94A Comp 1 1/2" Ball Valve receiver tank pressure transducer iso valve
95A Comp 1 1/2" Ball valve pressure transducer iso. valve
96 1/2" Ball valve pressure transducer tie line
97A Comp 1 1/2" Ball valve receiver tank discharge

95B Comp 2 1/2" Ball valve press. transducer iso
97B Comp 2 1/2" Ball valve discharge from receiver tank
98 1/2" Ball valve air supply to accumulator tanks

The search panel on the right allows for searching by name and related permits. The search results for 'Valve 92A', '87B', 'Valve 87A', and 'Valve 92B' are displayed. The 'related_permits' section lists several GLOBAL-IC-23-293X permits, each with a toggle switch.

Apply P&IDs in Isolation Certificates

- Use pre-drawn points
- Add temporary points
- Automatically create isolations



What's Next?

Upcoming

- Plotting Zones
- Automated plot points
- Broader Mobile PM Integration
- Derate Reporting and Calculations
- Notification Extensions



Questions?

Thank you