

Prometheus Planning and Scheduling

The Most Advanced and Flexible Solution for ECC and S/4 HANA

Sean McWhirter, Global Manager - Solution Engineering



PROMETHEUS GROUP

Agenda

- Prometheus Intro
- Maintenance Challenges with Digital Transformation
- Prometheus Planning & Scheduling Impact
- Key Features
- Questions

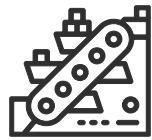
Prometheus Group

- Founded in 1998
- Headquartered in Raleigh, NC, USA
- 21 global offices
- Integrated and intuitive software
- Partnerships with industry leading companies



TOP 10

Oil & Gas



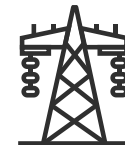
TOP 8

Mining & Metals



TOP 8

Pulp & Paper



TOP 8

Utilities



TOP 6

Chemical



PROMETHEUS GROUP

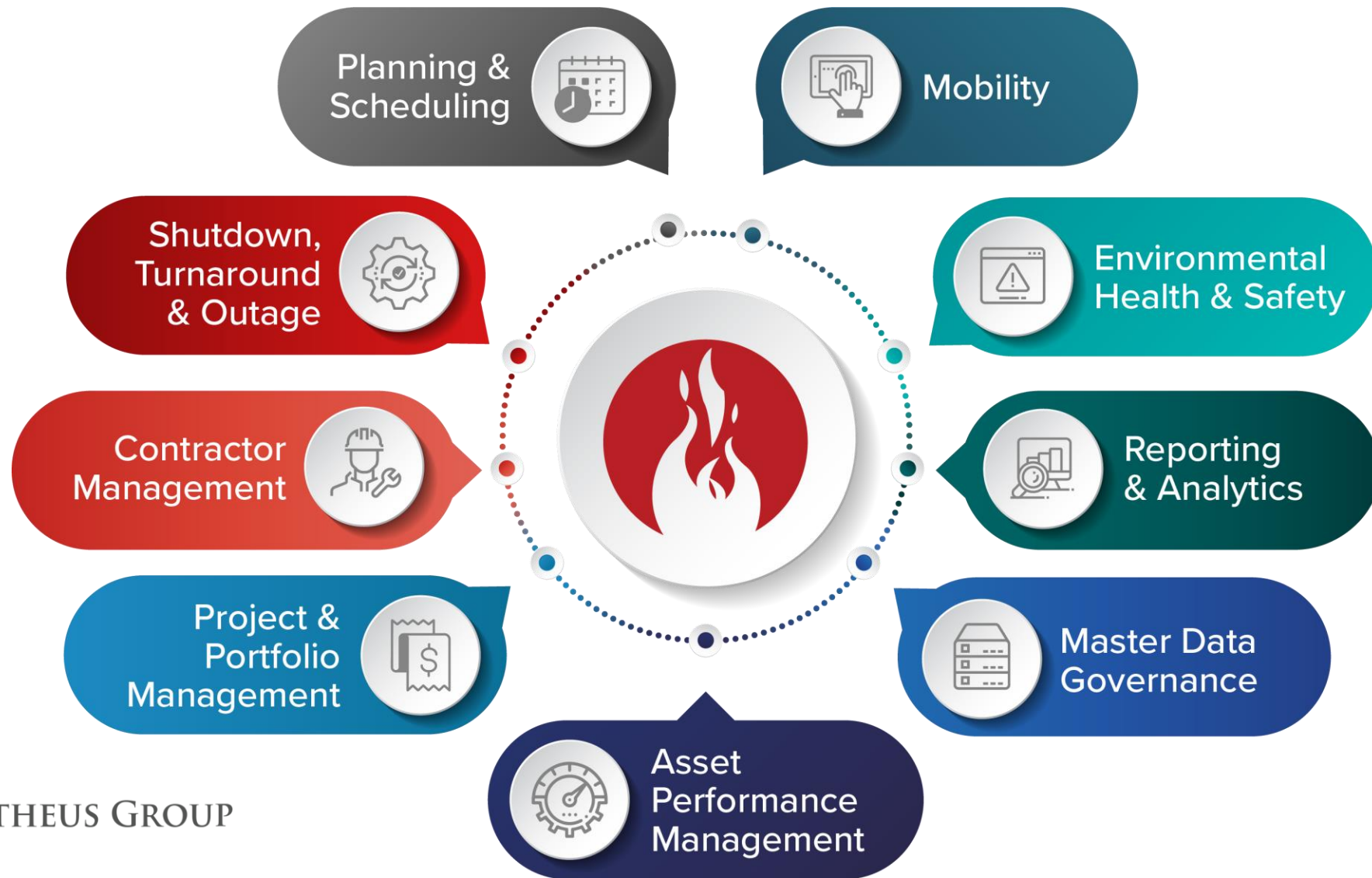
SAP® Certified
Integration with SAP S/4HANA®

ORACLE® Gold Partner



Key Customers





Challenges



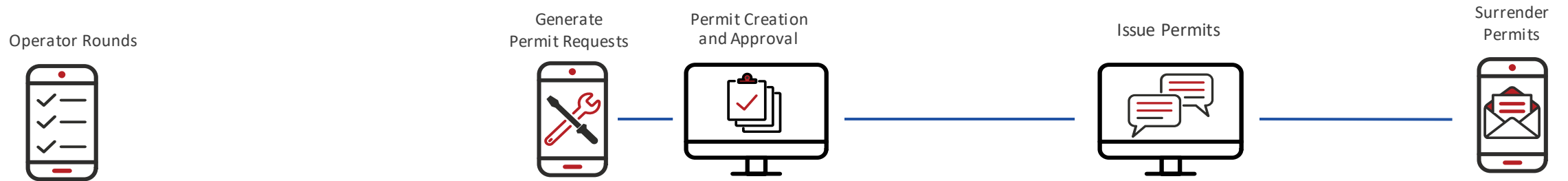
PROMETHEUS GROUP

Lost in Transformation

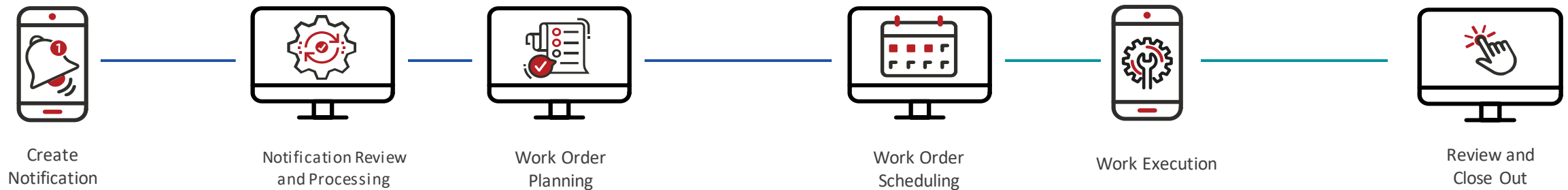
- Everyone's chasing digital transformation but for many it's hard to reach or be fully realized
- To simplify, digital transformation is just process improvements with just better tools and technology.
 - The key is making sure the technology supports process improvements, not the other way around
- S/4 is a great foundation and set of tools but how do we take full advantage of our investments and ensure project success?

Routine Work Execution Process

Operations



Maintenance



Challenges of Planning & Scheduling

- Access to Data
 - Data is available, but not necessarily easy to find or map to process
- Visualize capacity
 - Separate screens
 - Not easily editable for real-world shift rotations
- Adjusting Schedule
 - Production and Operations alignment challenges
 - Often requires specific process steps that do not align with maintenance process
 - Difficult to manage for break-ins/mass updates

Common Results WITHOUT Prometheus

- Exporting to Excel
- Lack of SAP usage
 - Multiple data sources
- Limited analysis and improvement
- Avoidable delays

The Need for Planning and Scheduling...

25% -
35%

Average Wrench
Time Without
Proper Planning &
Scheduling

3-4x

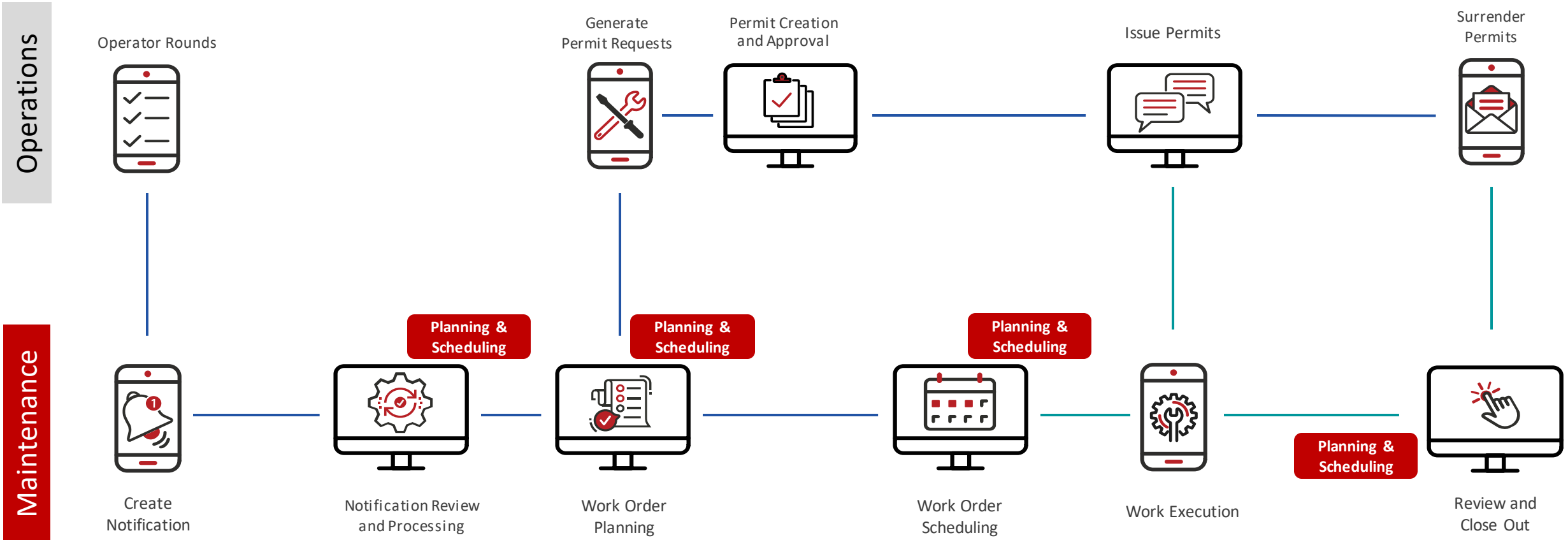
Cost of Reactive
Work Compared to
Planned Work

65%

Possible Wrench
Time With Proper
Planning &
Scheduling

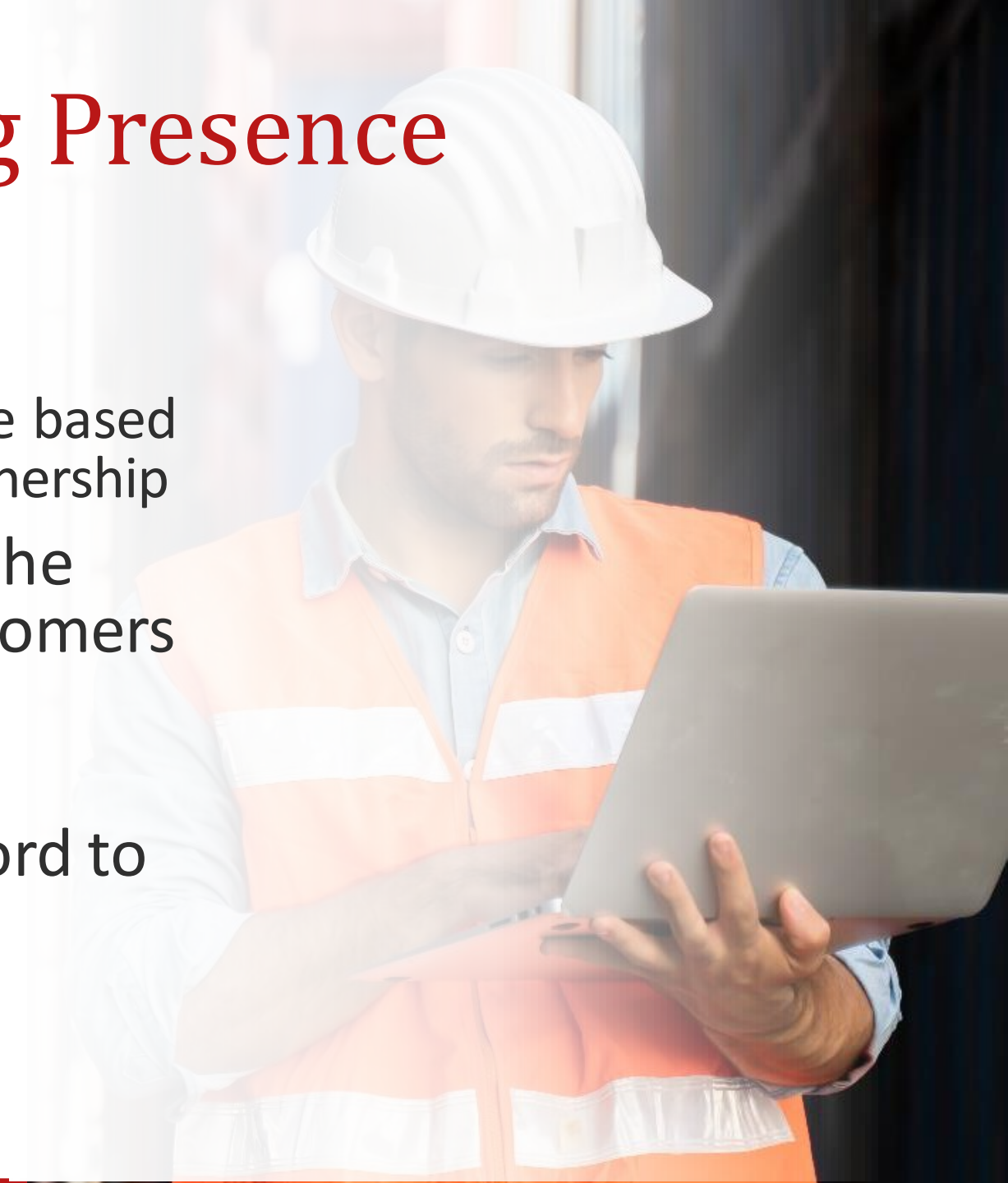


Prometheus Planning and Scheduling



Prometheus Scheduling Presence

- Leading P&S solution for 25+ years
 - Simplified live scheduling with SAP
 - Filled gaps from the base PM module based on user direction and customer partnership
- Have expanded Scheduling use in the Web to increase value add for customers and IT organizations alike
- Customers aren't waiting for SAP solutions to catch up and can't afford to maintain integration projects



Brief Web Scheduler History

- Development since 2015 – web visualizer first
- Going beyond GUI features
 - Fewer restrictions
- All new customers are on web and have been since 2020



Don't Wait for S4

- Web Scheduler is live in ECC
- Take advantage of new, value-add features
 - No sacrifice to performance or GUI features
 - Increase ROI
- Prepare for the eventual S4 transition
 - Minimize change impact on the maintenance team



Lessons Learned in S4 P&S

- Business at the table
- Map process to software, not the other way around
- Not simply IT for maintenance
- Gaps still exist with ERP and maintenance
- SAP as source data but partners to ensure process excellence

Expanding Partnership






Prometheus has been engrained within SAP for 25 years, but we've recently gotten even more involved:

- SOLEX MDG
- App Store
- Actively promoted by SAP to ensure customer success



Prometheus Web Scheduler

Industry has been trending towards web interfaces (S4 HANA, Fiori):

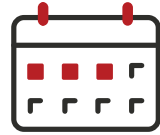
-  ECC and S4 compatible
-  More flexibility and new features
-  Cloud deployment options/lower IT burden
-  UI/UX Uplift
-  Platform Integration

Planning & Scheduling



Dashboard

Easily standardize your process with a custom layout for all roles



Graphical Scheduler

Schedule all work directly inside of SAP with real-time capacity data and carry out mass changes



Order Planner

View and plan work orders in a simplified view and access planning enhancements



Work Package Manager

Collate all required documents in order to complete a work order



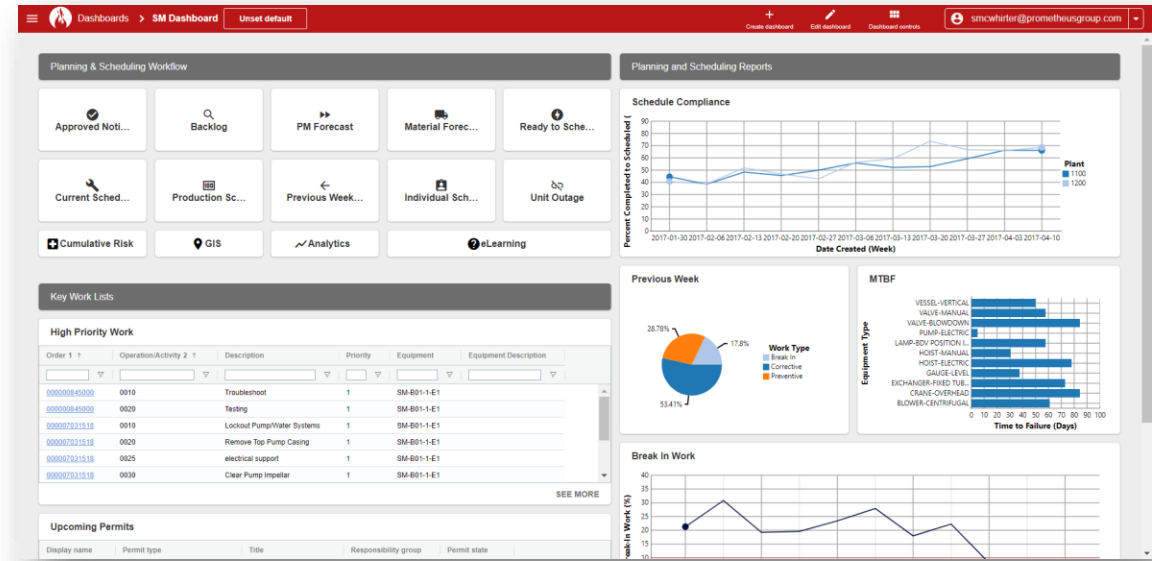
O2TL & O2BOM

Streamline work orders by copying information to task lists and BOMs to use in the future



Material Shopping Cart

Search for materials with a multi-word search to ensure the right materials are added

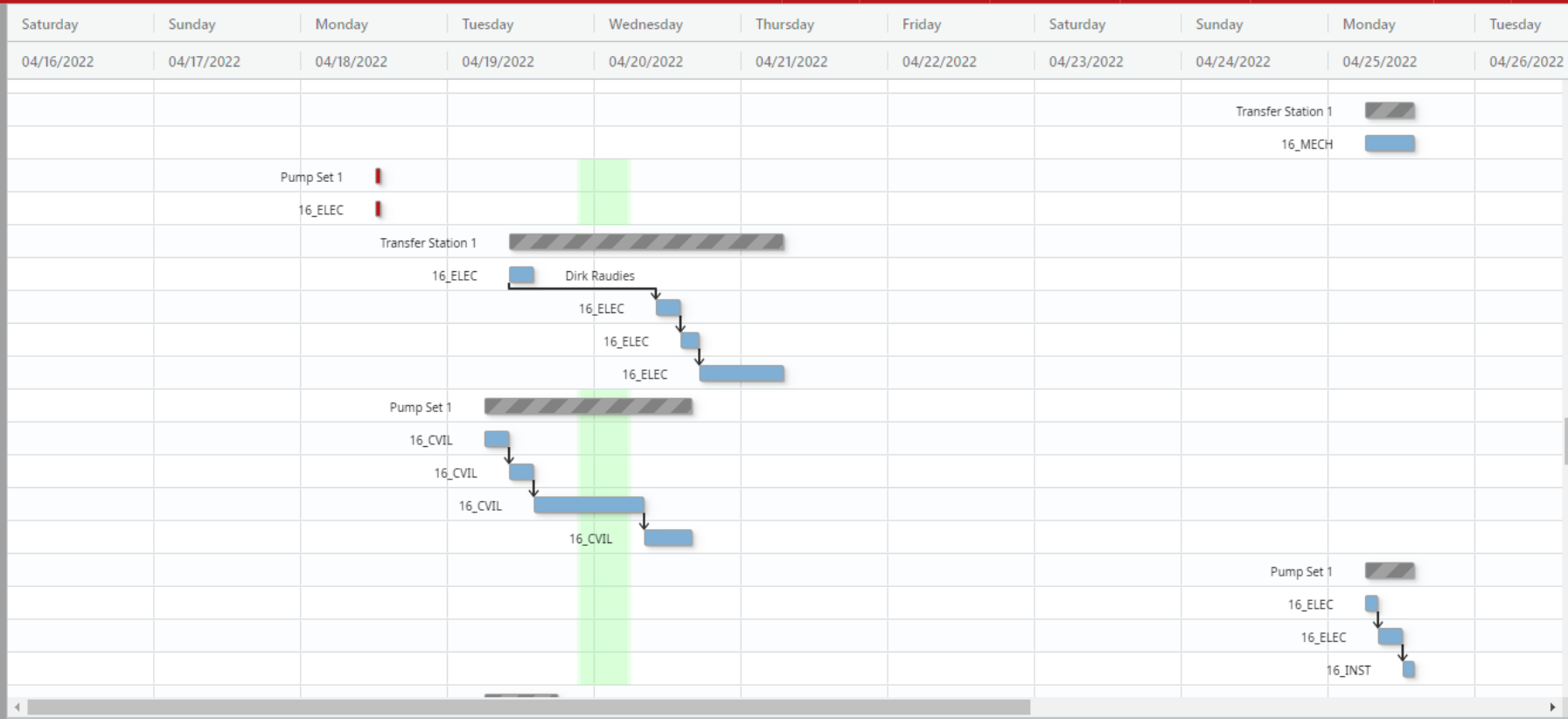


Key Features of Web

- Live SAP Integration
- Configurable to industry and process needs (no forced path in SAP)
- Vendor with proven maintenance experience and SAP best practices
- Scalability to PMs, Materials, PS, Production, and more!
- Scheduling Highlights:
 - Production Overlay
 - Tiered Auto-Level
 - Weighted priority
 - GIS Routing
 - Skills Management



Group	Priority 2 ↑	Description	Work
7070573	3	Strainer Piping Inspection	
0010	3	Forward Void Strainer Piping Inspection	8
7075766	3	leak on outboard bearing	
0010	3	leak on outboard bearing	1
7031521	4	Solder Loose Wire Connections	
0010	4	Lockout Various Pumps	4
0020	4	Solder Connections	4
0030	4	Unlock	3
0040	4	Test and Verify	2
7031527	4	Repair Various Oil Leaks	
0010	4	Lockout	4
0020	4	Remove Pipe Sections	12
0030	4	Repair/Replace Piping	18
0040	4	Unlock/Verify	8
7031532	4	Recalibrate Meters	
0010	4	Lockout	2
0020	4	Callibrate	4
0030	4	Unlock/Verify	2



Resource	Description	Plant
16_MECH	Mechanic	1000
16_INST	Instrument	1000
16_ELEC	Electrical	1000
16_CVIL	Contractors	1000

	04/16/2022	04/17/2022	04/18/2022	04/19/2022	04/20/2022	04/21/2022	04/22/2022	04/23/2022	04/24/2022	04/25/2022	04/26/2022
16_MECH	OFF	OFF	53 / 60	51 / 60	49 / 60	52 / 60	50 / 60	OFF	OFF	12 / 60	0 / 60
16_INST	OFF	OFF	34 / 60	43 / 60	52 / 60	61 / 60	57 / 60	OFF	OFF	24 / 60	0 / 60
16_ELEC	OFF	OFF	70 / 60	42 / 60	50 / 60	39 / 60	43 / 60	OFF	OFF	19 / 60	0 / 60
16_CVIL	OFF	OFF	2 / 72	28 / 72	37 / 72	40 / 72	19 / 72	OFF	OFF	0 / 72	0 / 72



Tiered Auto-Level

- Create and save a scheduling algorithm
- Define % utilizations based on specific work criteria in a single pass
- Save to align expectations for best practice



Weighted Priority

- True, calculated work order prioritization
- Which is more critical?
 - Priority
 - ABC indicator
 - Due date
 - Age
 - Order Type



GIS Enhancements

Plan work order routes on a GIS overlay

Optimize Route planning at the work center or resource level

Navigate to jobs via mobile application

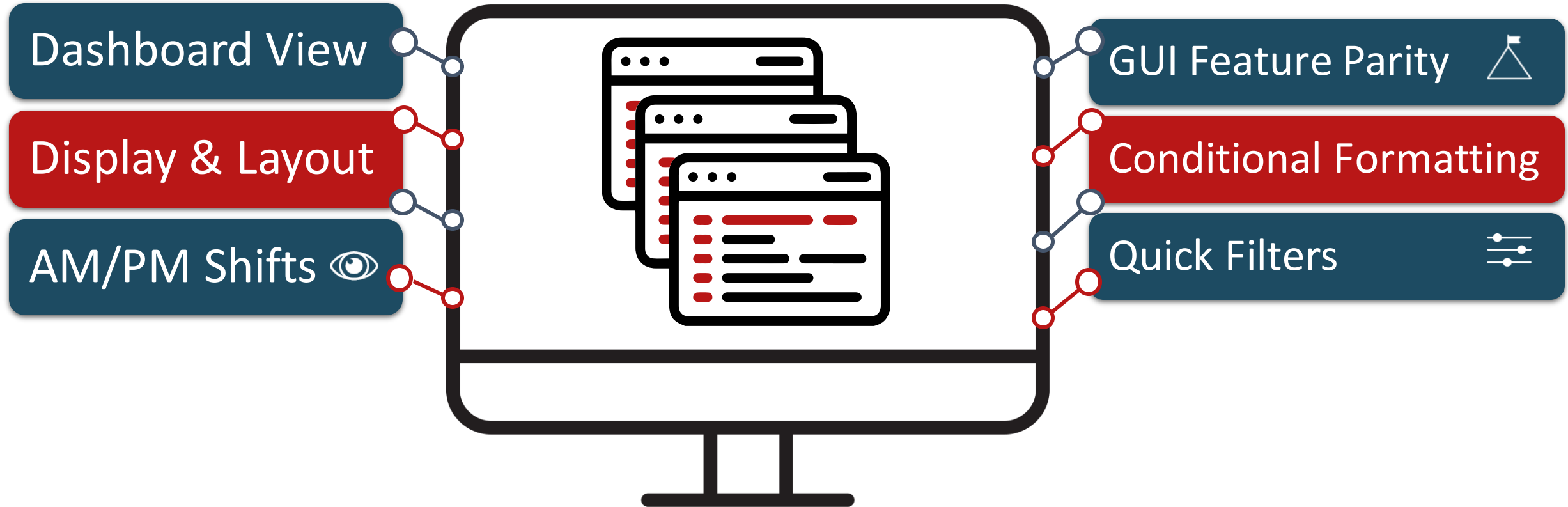
The screenshot displays the GIS Planner application interface. The top navigation bar includes a menu icon, the application title 'GIS Planner', and various utility icons like back, refresh, notifications, home, settings, save, and delete. Below the navigation bar, the 'Route Date' is set to '08-06-2020'. The main area is divided into two panels: a personnel list on the left and a task list on the right. The map on the right shows a route planned through the Raleigh area, with numbered markers (1, 2, 3) indicating specific work order locations. The map includes street names, highways, and a legend at the bottom right.

Personnel ...	Name	Cap. (hr)
00001502	Lou Garcia	7.0
00000000		7.0
00000000		7.0
00100096	Bob Abe	7.0
00000000		7.0
00992000	Sam Barker	7.0

Task	Description	Task Time ...	Route Pri
7031536 - 0010	Lockout Condensor	0.0	Low
7031536 - 0020	Troubleshoot Inst.	1.0	Low
7060534 - 0010	Clean Sluice Tank	4.0	Low
7031536 - 0030	Verify Inst	1.0	Low
7031536 - 0015	Uncouple motor	1.0	Low
7031536 - 0040	Unlock	1.0	Low
7031536 - 0050	New Step	1.0	Low

Route Data Returned

UI/UX Update



What's Next?

- Planning Advancements
 - Norms Based Planning
 - Robust Planner Config
- Resource Management
 - Rotating shift management
 - Free Text Contractors
 - Crew Building
- Platform Integration
 - RiskPoynt
 - APM

The image displays three overlapping software windows. The top window is a dialog titled "Add Norms to Operation" with a search criteria section and two tables. The middle window is "Shift Updater" showing shift management options. The bottom window is a resource grid showing employee schedules.

Add Norms to Operation - Search Criteria

Norm Action: Search Plant Multiplier: Work Center Multiplier:

Norm Name	Norm Action Name	Work	Corrections	Factor
ROV10/16-15	Remove Valve	1.8		1

Norm Name	Description	Work	Active	Norm Action Name
<input checked="" type="checkbox"/> ROV10/16-15	PN10/16 x DN15	1.8	true	Remove Valve
<input type="checkbox"/> ROV10/16-25	PN10/16 x DN25	1.9	true	Remove Valve
<input type="checkbox"/> ROV10/16-400	PN10/16 x DN400	11.6	true	Remove Valve
<input type="checkbox"/> ROV10/16-500	PN10/16 x DN500	15.3	true	Remove Valve

Number Of Results: 19

Additional Norms Table:

Name	Factor
<input type="checkbox"/> Cloudy	1.2
<input type="checkbox"/> Cloudy	1.2
<input checked="" type="checkbox"/> Hall	1.5
<input type="checkbox"/> Hall	3

Number Of Results: 10

Buttons: Cancel, Submit

Shift Updater

Save Query: Bedford Date Range: 03/15/23

Buttons: NIGHT, EVENING, 4-10, W, DAY, FLOATER

Resources

Labor ID	Weeks	Location ID	Calendar	Shift	Name
WILSON	BEFORD	BEFORD	DAY	EVENING	Mike Wilson
SCHARR	BEFORD	BEFORD	DAY	NIGHT	Leonard Scharr
LIBBY	BEFORD	BEFORD	DAY	EVENING	Diane Libby
SMITH	BEFORD	BEFORD	DAY	NIGHT	Robert Smith
KELLER	BEFORD	BEFORD	DAY	DAY	John Keller
WINSTON	BEFORD	BEFORD	DAY	EVENING	Steve Winston
ROGERS	BEFORD	BEFORD	DAY	DAY	Paul Rogers
LEE	BEFORD	BEFORD	NIGHT	DAY	Mike Lee
HULLY	BEFORD	BEFORD	DAY	DAY	Howard Hull
SCHMIDT	BEFORD	BEFORD	DAY	DAY	Jim Schmidt
BALL	BEFORD	BEFORD	NIGHT	EVENING	Alan Ball
HICKOK	BEFORD	BEFORD	DAY	DAY	Mike Hickok
LAZARUS	BEFORD	BEFORD	DAY	DAY	Tom Lazarus
MILLER	BEFORD	BEFORD	DAY	EVENING	Steve Miller
ALLEN	BEFORD	BEFORD	DAY	DAY	Rebecca Allen
BALDWIN	BEFORD	BEFORD	DAY	14DAYS	Kurt Baldwin
BARRI	BEFORD	BEFORD	DAY	NIGHT	Thomas Barri
PORTER	BEFORD	BEFORD	DAY	DAY	Andrew Porter
WINTERS	BEFORD	BEFORD	DAY	2-DAYS	Clark Winters
CHARBY	BEFORD	BEFORD	DAY	3-DAYS	Larry Charby
CARSON	BEFORD	BEFORD	DAY	DAY	Teri Carson
ONDOOR	BEFORD	BEFORD	DAY	DAY	Bob Odoor
JOY	BEFORD	BEFORD	DAY	2-DAYS	Greg Joy
ONES	BEFORD	BEFORD	DAY	DAY	Frank Ones
GRANGE	BEFORD	BEFORD	DAY	16-DAYS	Lou Grange
STANLEY	BEFORD	BEFORD	DAY	NIGHT	Paul Stanley
HARDY	RUST	RUST	COMBANI	COMP1	James Hardy

Benefits Summary

- Improve planning & scheduling efficiency
- Reduce equipment downtime
- Increase wrench time
- Reduce contractor needs
- Minimize delays with production, spares, and other avoidable delays
- Improve maintenance strategies

Thank you