

Operator Rounds: Digital and Configurable Checklists for Increased Efficiency and Accuracy

April 23, 2024



PROMETHEUS GROUP | **USER**
17TH ANNUAL

CONFERENCE

NORTH AMERICA

Speaker Introduction



Bailey Brandel
Solutions Engineer



Optimizing Your Operator Rounds Strategy



Where To Start?

- Digitization projects can appear daunting due to:
 - Lack of effective system of record use
 - Large number of paper-based processes and administrative tasks
 - Uncertainty about where to start – no structured plan in place
- There are simple approaches to manage the transition to a more digital process
- You're able to go at your own pace – it doesn't have to be all or nothing!



Digitization Efforts – Operator Rounds

- Break it down to identify the highest priority items
- What are the most performed items?
- Are there shared processes in place?
- Start to think about templates



Digitization Management

- Set reasonable timelines for the manageable selection of processes you've made
- Enlist help outside of your organization
- Anything worth doing in the long term is going to require effort and strategy



Building Your Library

- Start with your data control
 - How are you dividing responsibility?
 - Asset groups
 - Physical location
 - Type of work
 - Work Groups
 - Foundational organization will ease downstream efforts



Build Your Strategy



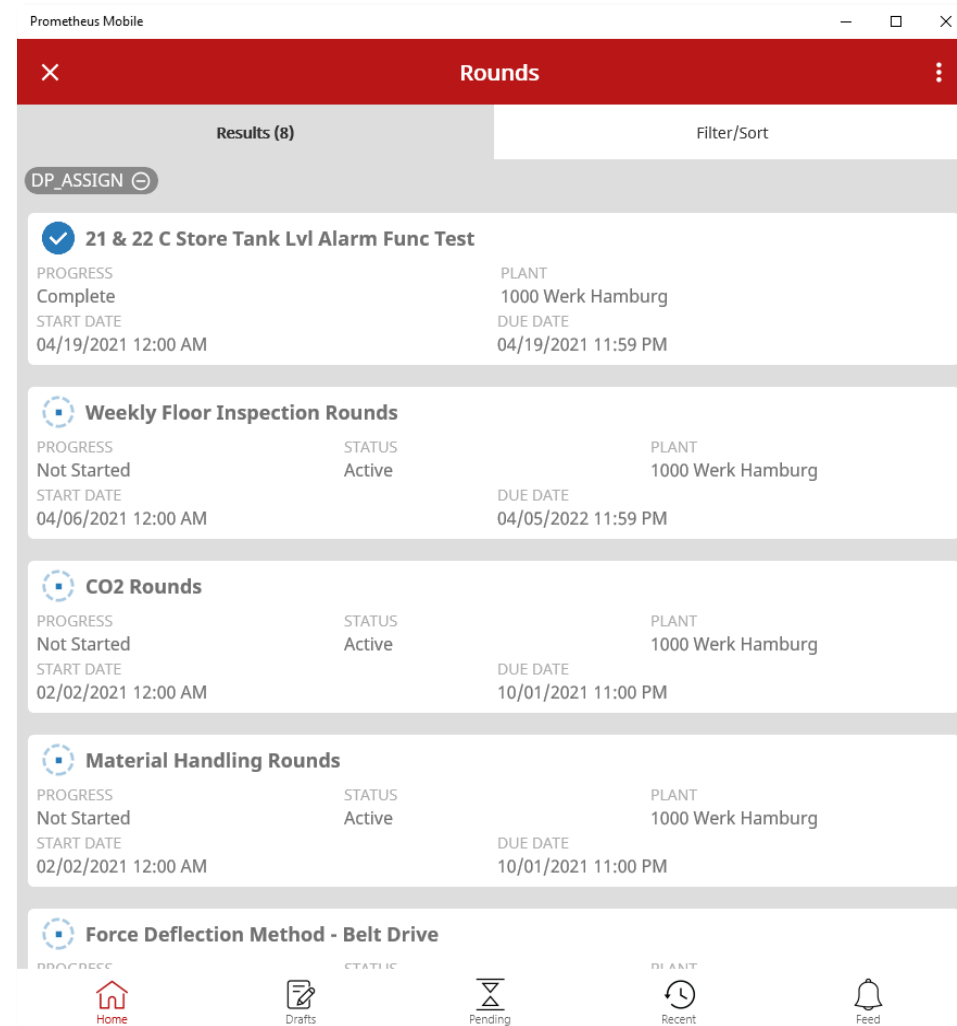
Building Your Strategy

- Consider alignment with PM schedules – Are there tasks that need to be completed alongside PM work?
- Leverage Data Groupings – Some examples:
 - Pre-use inspections for fleet management
 - Lubrication rounds
 - Fire extinguisher inspections
 - Processes that require certification and qualification management



The Foundation of Your Strategy

- Asset information
- Measurement Points
- Question Content
- Workflow Builds



Structuring Your Rounds

- It's important to understand where information needs to be captured
 - Do certain readings need to be captured in your CMMS?
- Prometheus Operator Rounds create consistency when we need it, and flexibility when we don't
 - Example: Fire extinguisher rounds are incredibly important, but these assets do not need equipment records in SAP!



Asset Landscape

- Catalogues
- Asset Hierarchy – Think about items that already exist in SAP – Do we need history there?
- Master Data Elements

The screenshot displays the SAP Assets interface. The left sidebar shows a hierarchical tree structure under 'DP-B, Biological Cleaning'. The main content area shows a table of measurement points for 'DP-B-E1, Bio Service Water Main Line Valve'.

Measuring Point	MP Description	Characteristic/Code Group	Characteristic/Code Group Description
13757	Pump Total Run Time	OPERATION_HOURS_1	Operation hours: machines
13759	Pump Total Run Time	UT-OPH	Operating Hour Meter
13762		PRESSURE_LOSS_1	Loss of pressure: water filter

The right panel shows the 'QUESTIONS' tab with a table of question templates:

Title	Component Type
Pump Run Time	QuestionTemplate
Differential Pressure Reading	QuestionTemplate



Measurement Points

- With or Without ERP integration
- Allows us to create historical reference, trending, and analysis
- Drive PM Compliance and trend towards more predictive maintenance practices

Prometheus Mobile

Question Summary

7 ALL 0 ANSWERED 7 INCOMPLETE 0 EXCEPTIONS

Search

No Asset

Shop Temperature DETAILS

Reading 62 °F

Acceptable value between 64 and 73 °F

Comments

Comments

Inform Area supervisor

NEXT

3D Measurement

Is the pump running?

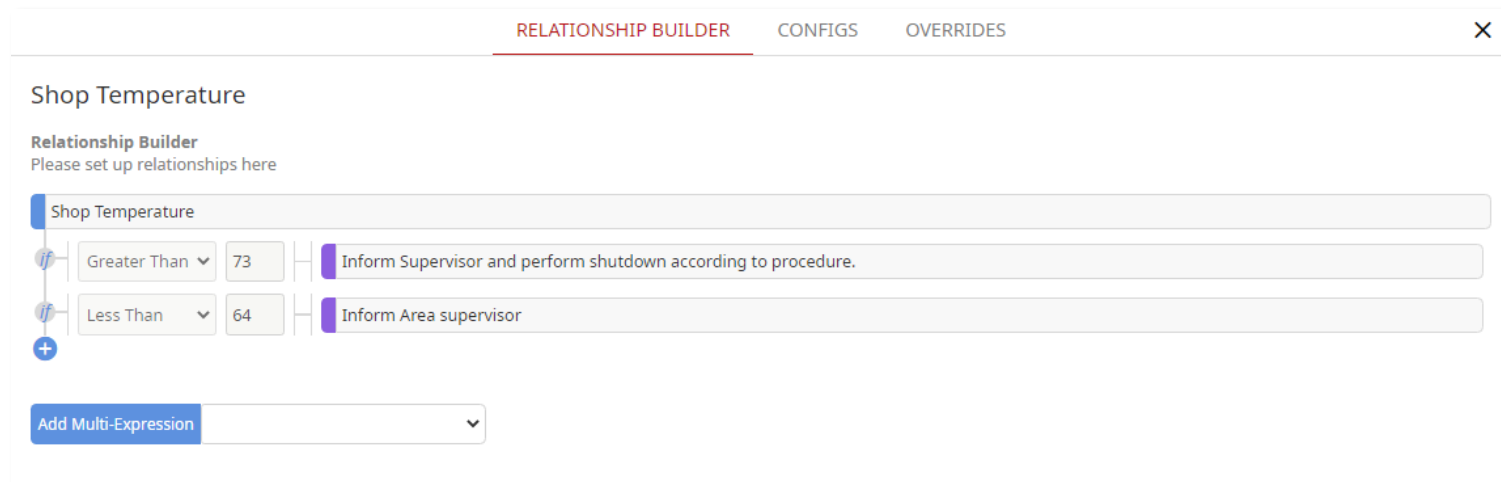
Spot Check FOD

SAVE SUBMIT



Tie It Together

- Use calculations to ensure action is only taken when it's needed
- Actions and Workflows – You control the process, and the right people are reviewing any escalations
- ERP touchpoints – Notification and Work Requests – automated or manual



The screenshot shows a web interface titled "RELATIONSHIP BUILDER" with tabs for "CONFIGS" and "OVERRIDES". The main content area is titled "Shop Temperature" and contains a "Relationship Builder" section with the instruction "Please set up relationships here". Below this, there are two rows of relationship rules. The first row shows a condition "Greater Than" with a value of "73" leading to the action "Inform Supervisor and perform shutdown according to procedure." The second row shows a condition "Less Than" with a value of "64" leading to the action "Inform Area supervisor". A plus sign icon is visible to the left of the second row. At the bottom, there is a button labeled "Add Multi-Expression" next to a dropdown menu.



Section 3 – Analyze and Maintain



Getting The Most Out of Your Program

- There are benefits to a strong ERP integration – But only when you need it
 - Leverage:

Asset Hierarchy

- Consider which items are important for our asset history. Were any issues identified that need correction? Was or should work be completed?

Measurement Entry

- Measurement points are usually important for asset history (but not always) and can drive sophisticated PM schedules

PM Strategies and Schedules

- Align rounds with existing PM schedules

- Continued monitoring and easy to use systems should be in place to drive continuous improvement and the returns on asset health for which we are ultimately striving



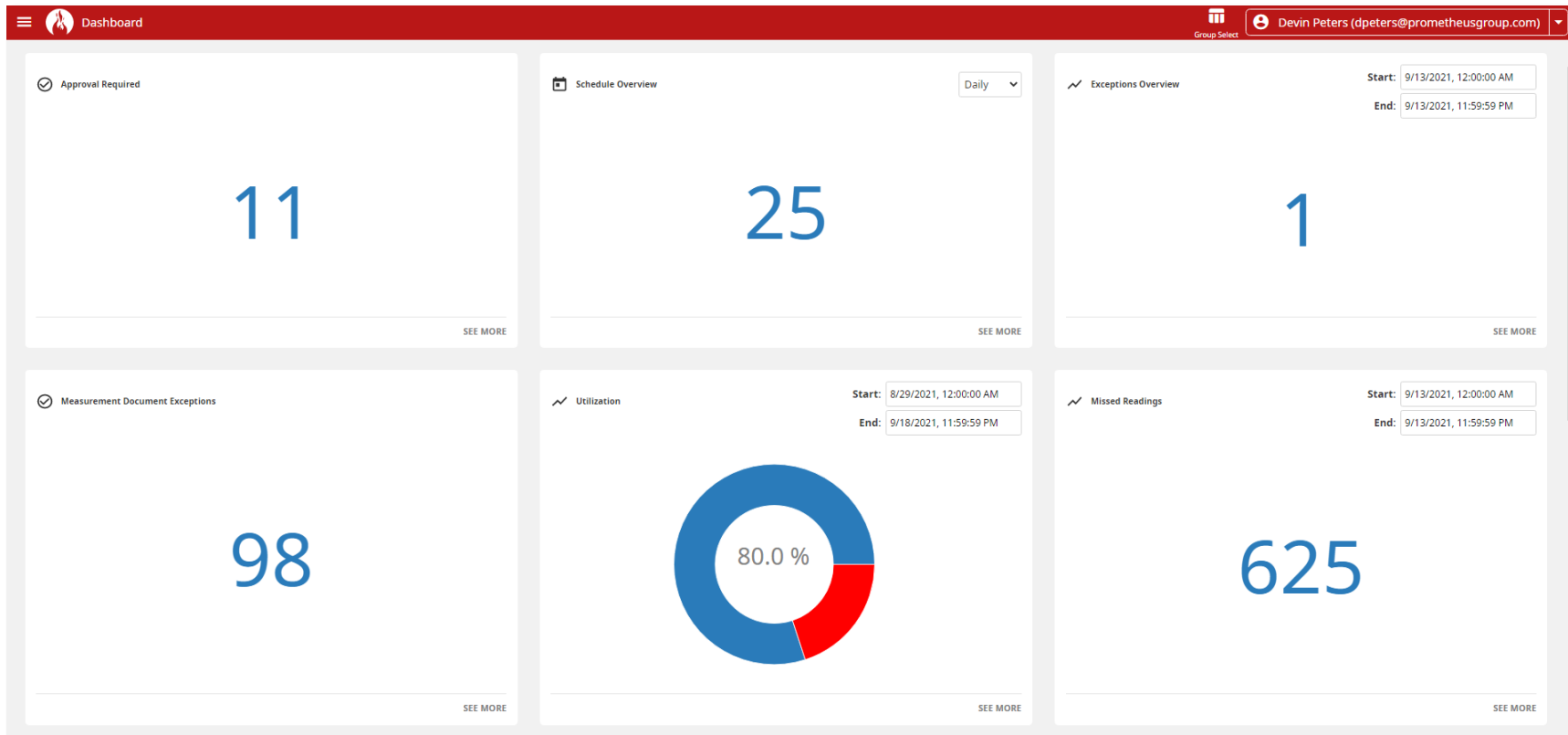
Analyzing the Program

- Monitor and Improve the process with actionable insight
 - Are current processes leading to found work?
 - Are certain inspections required/ necessary?
 - How often do measurement entries deviate from the expected?
 - How often are inputs missed?
 - The data we don't get is just as important as the data we do



Getting The Most Out of Your Program

- Strategic and Targeted Dashboard Management



Additional Controls?

- Filling in the Gaps
 - Scanning at the asset location – avoid “pencil-whipping”
 - As-found image capture – attach photo and video records to a round, or to the notification/ work request
 - Supervisory review and approval – add review when you need it and track how often items are escalated and adjust as needed. The process is not stagnant!





Demonstration



Thank You!

Questions?



PROMETHEUS GROUP | **USER**
17TH ANNUAL **CONFERENCE**
NORTH AMERICA

Bailey Brandel – Sales Engineer