

Best Practices in Commissioning, Completions, and Handover of Capital Projects

Michael Kirst – Sr. Co-Console Expert

Jonathan Addison – Sr. Functional Consultant



PROMETHEUS GROUP
17TH ANNUAL

**USER
CONFERENCE**

NORTH AMERICA

Agenda

- Intro to Prometheus
- Customer Common Pain Points
- Best Practices
- Co-Console Functionality and How it Helps
- Live Demonstration

Prometheus Group

- Founded in 1998
- Headquartered in Raleigh, NC, USA
- 10 global offices and 1000+ employees
- Integrated and intuitive software
- Partnerships with industry leading companies



TOP 10

Oil & Gas



TOP 8

Mining & Metals



TOP 8

Pulp & Paper



TOP 8

Utilities



TOP 6

Chemical

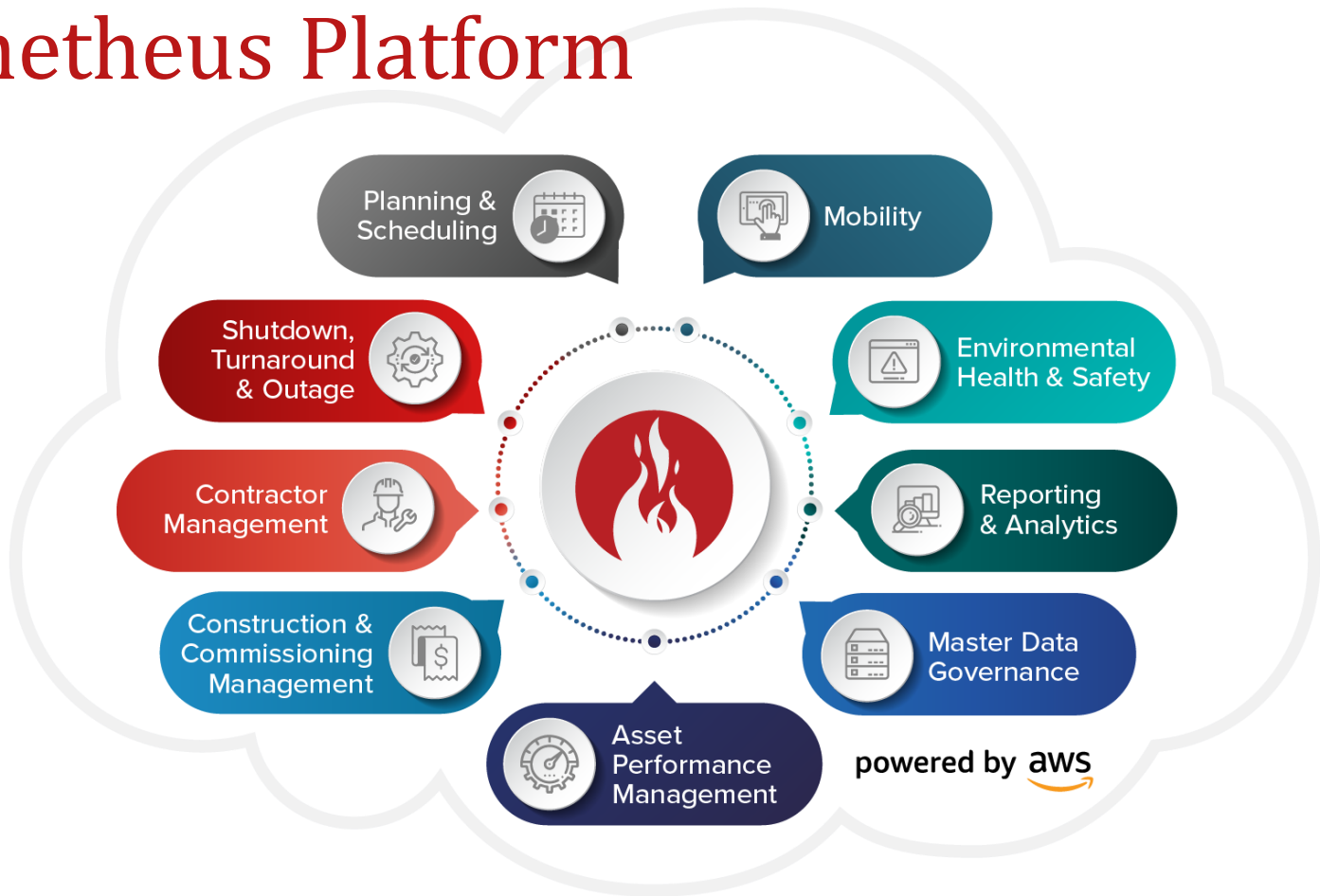


SAP® Certified
Integration with SAP S/4HANA®

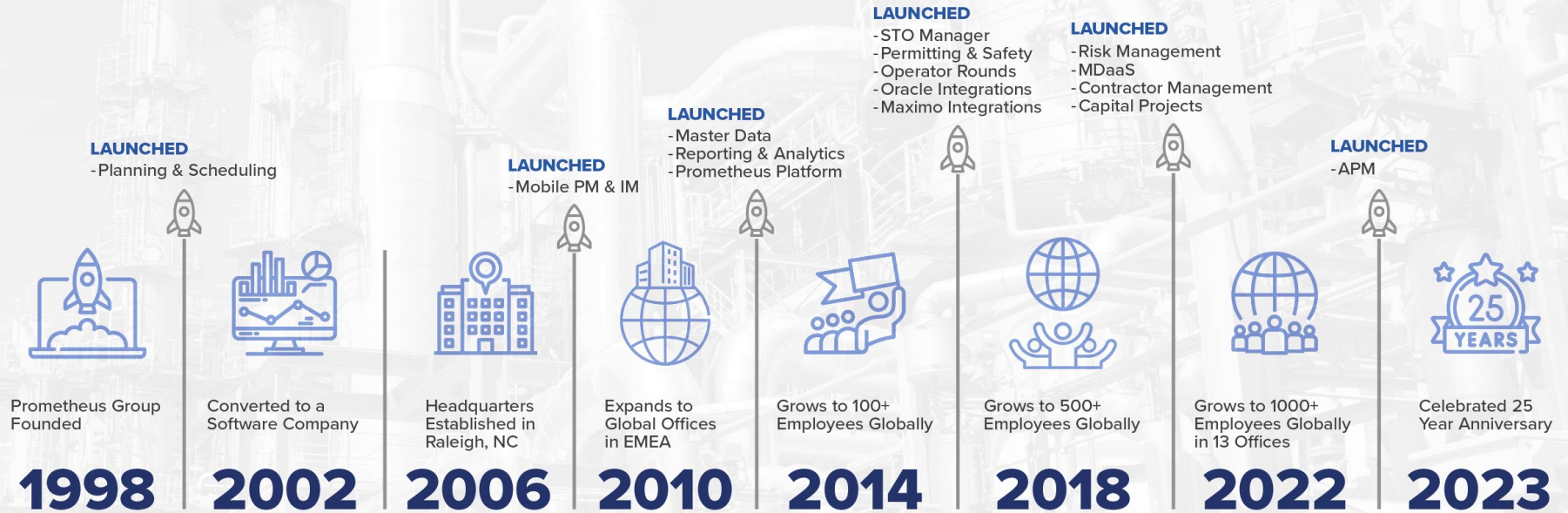
ORACLE | Partner



Prometheus Platform



The Prometheus Journey



Common Pain Points on Capital Projects

- Scattered locations for project evidence
 - Paper (or "digital" paper)
 - Excel
 - Network drives
- Rework due to incorrect/ missing records
 - Coffee-stained, torn paper = hard dollar cost increase
- Manual management of testing scope
 - Highlighting drawings: "digital" paper or real highlighters!
 - Revisions



Common Pain Points on Capital Projects

- Managing the handover
 - Compiling a handover package manually when you have 1000's of completed records
 - Where does the field data go?
 - ...Is the scope even ready to handover?
- Gap between field work and reporting progress
 - Project dashboards not up to date
 - Management doesn't have a clear picture of real site status
- Preventative maintenance (a.k.a. preservation)
 - How to ensure equipment is maintained, before it's put in service?
 - Surprise (at the end of the job): it wasn't!

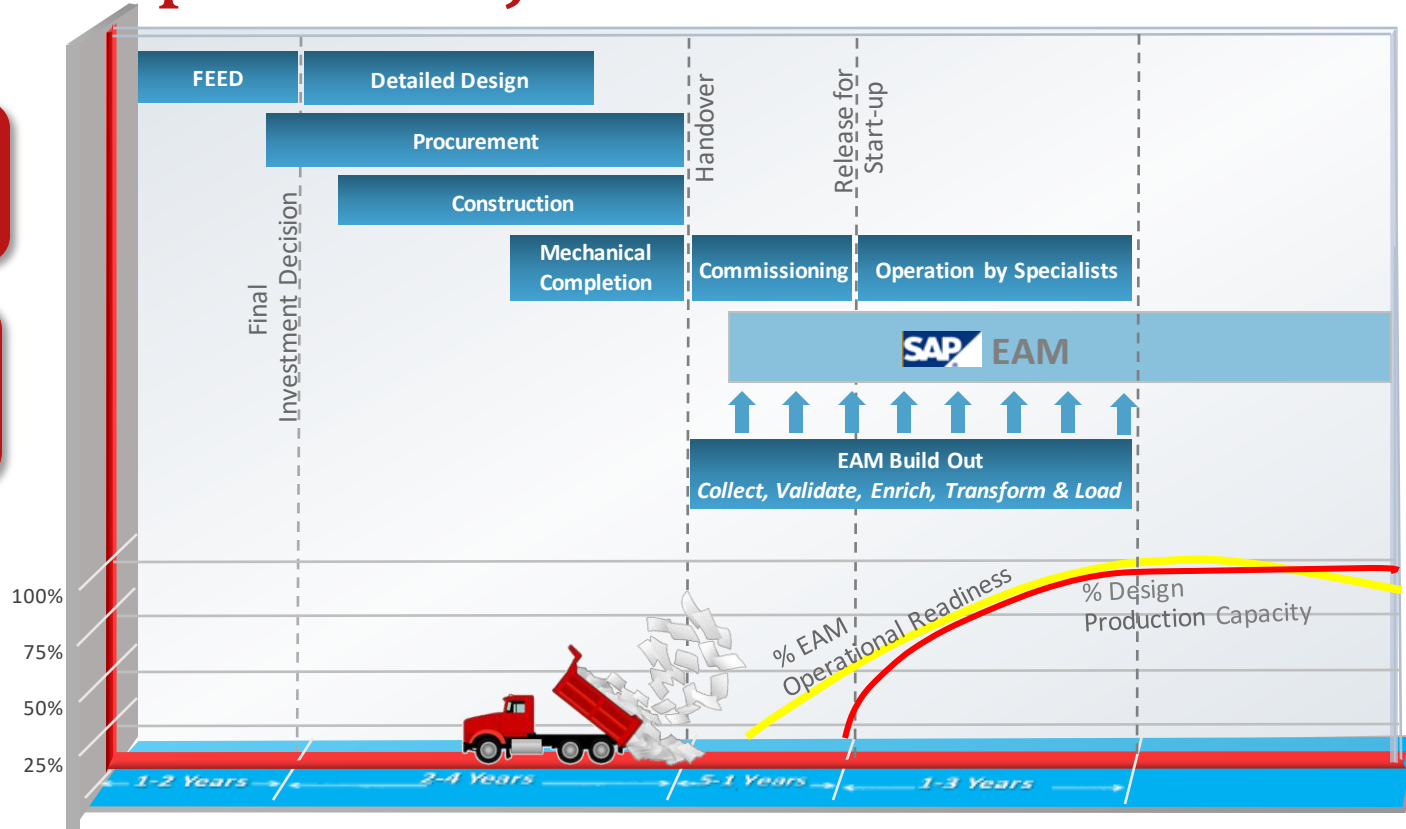


Traditional Capital Projects Processes

Many analysts agree that the average loss due to poorly managed information handover can equal over 1.5% of total CAPEX expenditures

Potential Impacts

- Reduced Asset Availability
- Extended Start-up Costs
- Increased EH&S Risks
- Increased Maintenance Costs

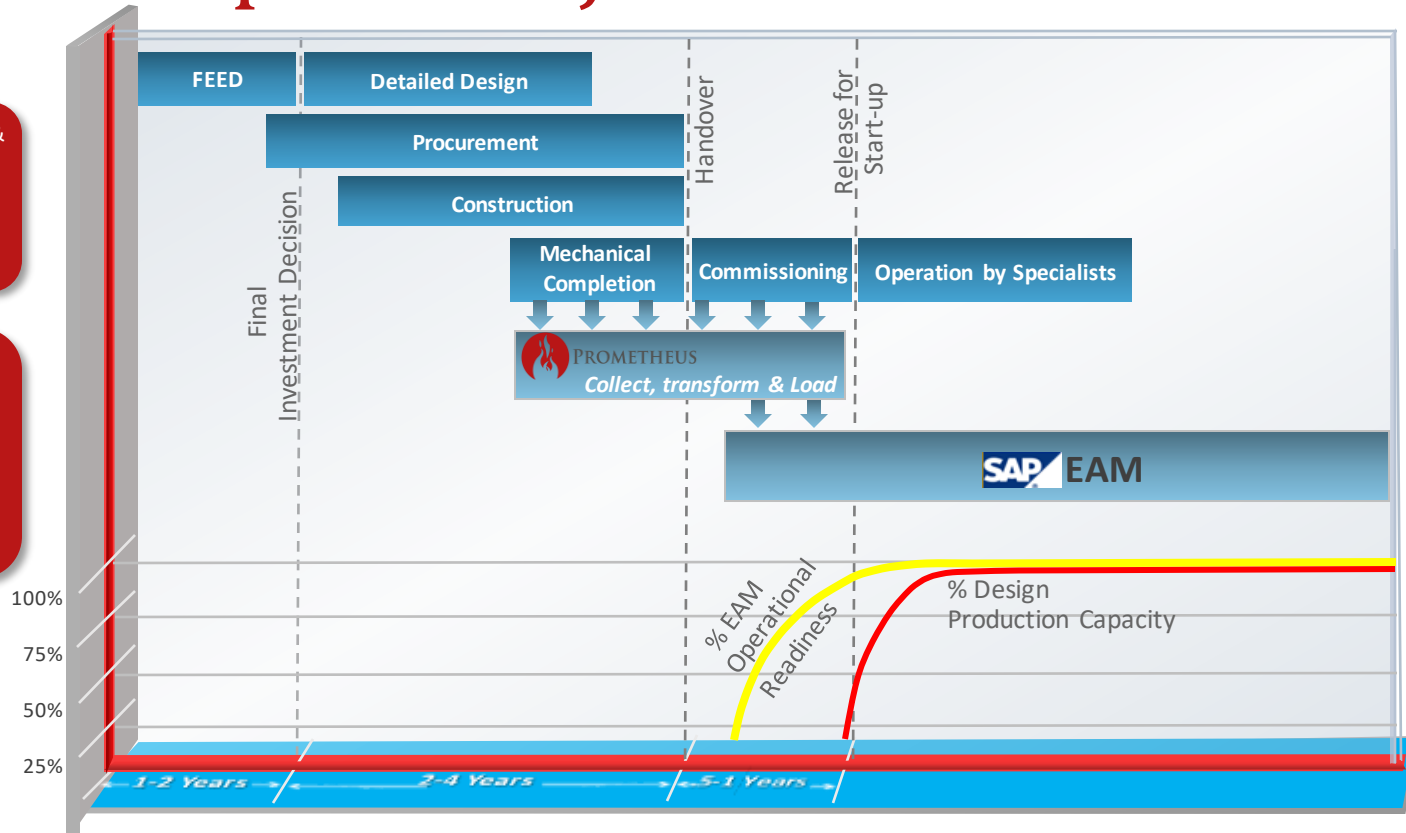


Best Practice Capital Projects Processes

Phased, progressive handover of vendor & design documentation with business process management and auditable MoC enables optimized facility lifecycle information management

Benefits

- Increased production
- Reduced EH&S Risks
- Reduced extended start-up ops costs
- Improved Maintenance productivity
- Reduced MRO spares costs
- Improved warranty management



Best Practices

- Having a complete and accurate data set
- Having an accurate scope breakdown
- Utilizing a tag-type matrix to manage inspections
- Having access to the latest revisions of construction and engineering documentation



Best Practices Cont'd

- Having a predefined and well-organized evidence organizational structure
- Having predefined reporting that can help you track your completion status
- Eliminating paper processes as much as possible
- Creating a well-defined handover procedure



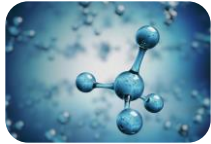
Industries We Serve



Petrochemicals



Gas / LNG



Chemical



Mining &
Metals



Fertilizer



Power



Wind Power



Nuclear



Offshore



Pharma



Manufacturing



Ship Building



Welding Shop



Data Centers



Infrastructure



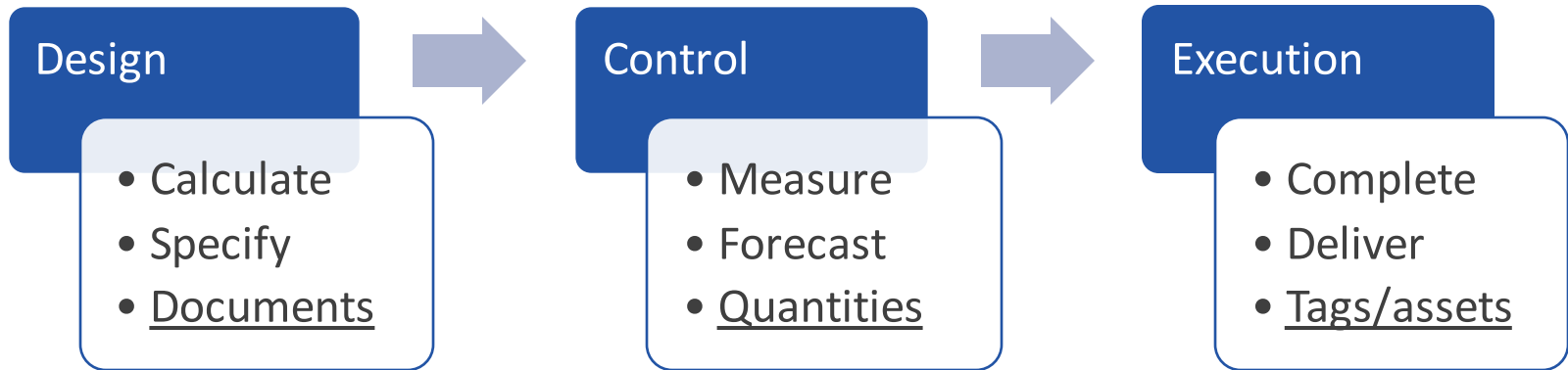
What is Co-Console?

- A **single point of truth** providing a **multi-discipline status** of technical and contractual project completion
- Methodologically prepare, complete and transition **FAT, receipt, installation, function testing, and energization**
- Monitors **individual equipment** based on **critical steps**, keeping the process relatively simple



Project Tools

- Co-Console proves physical completion and technical readiness
- Co-Console is a business critical tool for project execution, in addition to design and control tools

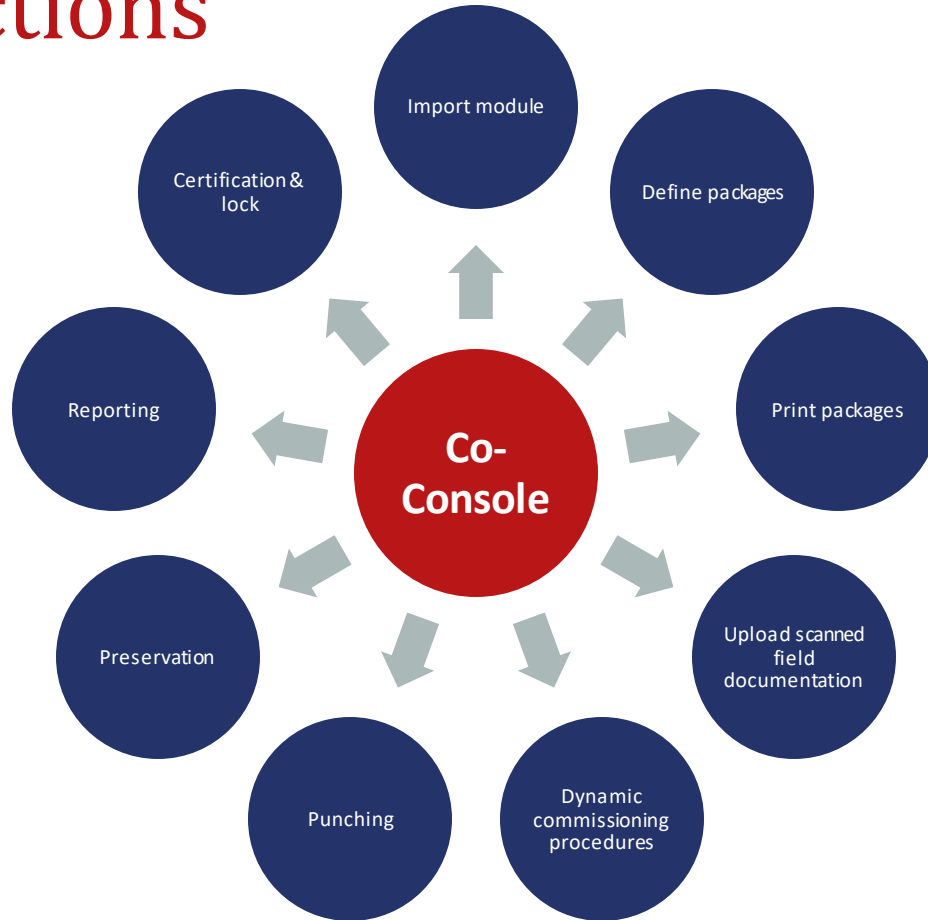


Co-Console Functionality and How It Helps

- View commissioning systems, milestones, modules, work packages, and equipment tags: **control your scope**
- Build electronic forms, sign forms, review forms, and add forms to an electronic turnover dossier: **smooth handovers**
- Perform punching, preservation, reporting, certification, and scope locking from a mobile device: **digital field execution saves time and money**
- View built-in reports, link your data to an external dashboard (e.g. PowerBI): **real-time project insight**



Basic Functions





Demonstration



Thank You!

Questions?

