

Increase Maintenance Efficiency in Oracle With Mobility and Planning & Scheduling

April 24th, 2024



PROMETHEUS GROUP | **USER**
17TH ANNUAL

CONFERENCE

NORTH AMERICA

Speaker Introduction



Nick Breedlove
Functional Consultant



Agenda

- Prometheus Background
- Current Trends
- How to Increase Maintenance Efficiency
 - Web Scheduler
 - Mobile
- Demonstration
- Questions

Current Trends

- Reduced Productivity
- Data Inaccuracy and Errors
 - Handwritten forms are prone to errors, illegible writing, and missing information
- Lack of Real-Time Visibility
- Inefficiency in Communication
- Storage and Retrieval Challenges



Ways To Increase Efficiency in Oracle

- Real-time integration with Oracle
- Managing all information in one screen
- Simplified adjustment of work orders and operations
 - Quality Plans
 - Work Order Completion
 - Material Requests and Issues
 - Meter Readings
 - Logging Time



Your Data in the Field

- Asset Information
- Drawings
- Diagrams
 - P&ID's or SLD's
 - Blueprints
 - Valves, Breakers, Blinds, and Other Isolation Points
- Inventory



Quality Plans and Meter Readings

- Crucial part of work order completion
 - Maintaining condition-based maintenance practices
 - Accurate KPI's
- Meter Readings
 - Trigger meter-based or runtime PM's
- Monitor the health of assets



Take Your Storeroom With You

- Reduce the trips to your desk
- Knowledge of inventory stock levels at any workstation
- Cycle Counts with direct entry in the field
- Material Movement
 - Issue
 - Return
 - Transfer



Work Order Management

- Accurately capture new issues found
- Log time against work orders
- View any associated documentation
- Request additional materials needed
- Complete work orders in the field

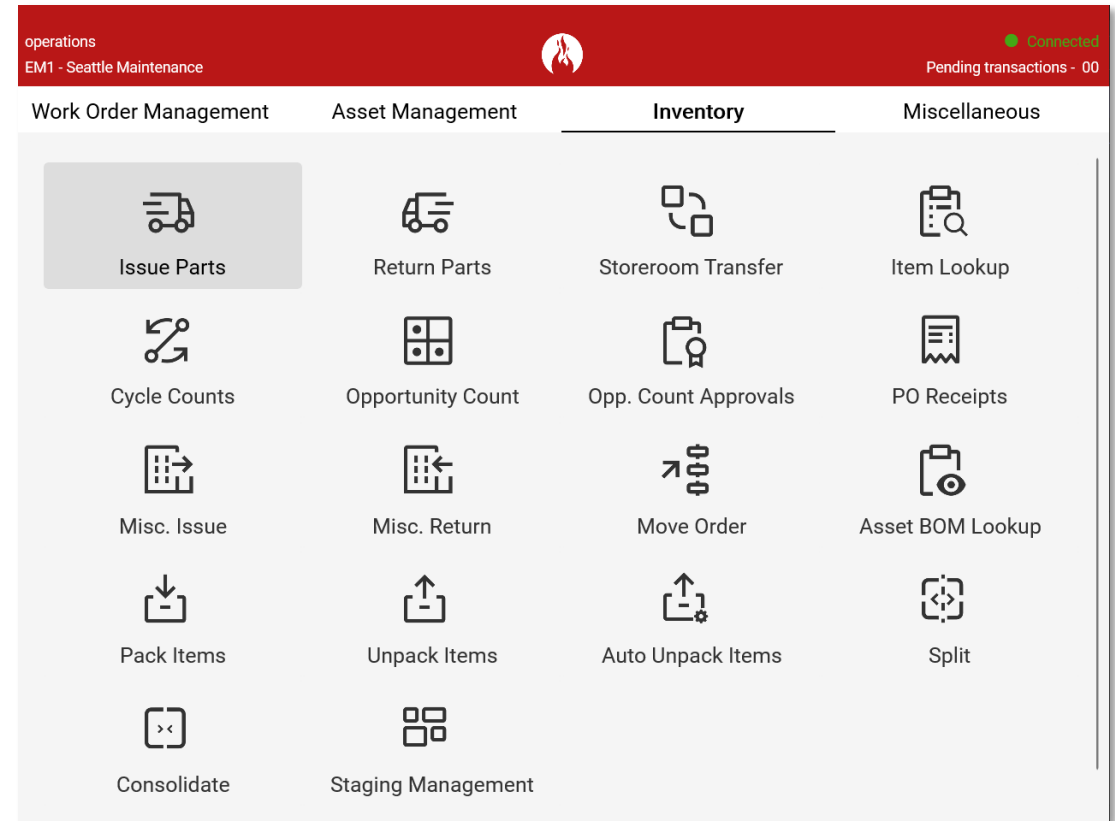
The screenshot displays a software interface for Work Order Management. The top navigation bar includes 'operations' and 'EM1 - Seattle Maintenance' on the left, and 'Maintenance' on the right. Below the navigation bar, there is a 'METRICS' section. A search bar is present with the placeholder text 'Enter WO number, description etc.'. Below the search bar, there are filters for '# Records' (200), 'F-Maint', 'RESOURCE', and 'Released'. A table lists work orders with columns for STATUS, DATE, ASSET, WO TYPE, and DESCRIPTION. The table contains five rows of data. To the right of the table is a 'Work Order Actions' sidebar for work order 'WO1312942', which includes options like 'View/Edit Work Order', 'Complete Work Order', 'Uncomplete Work Order', 'Enter Quality Plans', 'View Asset History', 'View Asset Documentation', 'View Activity Log', 'Create Follow-up Work Order', and 'Enter Time'.

STATUS	DATE	ASSET	WO TYPE	DESCRIPTION
Released	2023/02/08 04:49:00	AdamsTruck	Routine	Oil leak
Released	2023/02/23 06:33:12	AdamsTruck	Routine	Replace valve
Released Moll, Mr. Joe	2020/03/23 23:16:00	5522	Health & Safety	Lorem Ipsum is simply dummy text of the printing and typesetting industry.
Released Hager, Adam	2023/01/26 04:47:00	DTF35000	Rebuild	Test wo 4 for warra
Released Hager, Adam	2023/01/26 02:11:00	DTF35000	Routine	Test WO 3 for warra



Inventory Management

- Real-time view into material quantities and locations
- Manage issuances and returns
- Transfer items
- Receive PO's
- Cycle Counting



Impacts of a Scheduling Tool

- Streamlined Communication and Collaboration
- Improved Work Order Prioritization
- Optimized Resource Allocation
- Break-in Work Management
- Enhanced Compliance and Reporting



Streamlined Communication/Collaboration

- Allows for seamless communication between maintenance teams, supervisors, and operations
 - Ex. Equipment needs to be shutdown – can coordinate with operations
- Elimination of multiple systems being used while source of truth may not be current
- Assisting in daily or weekly scheduling meetings



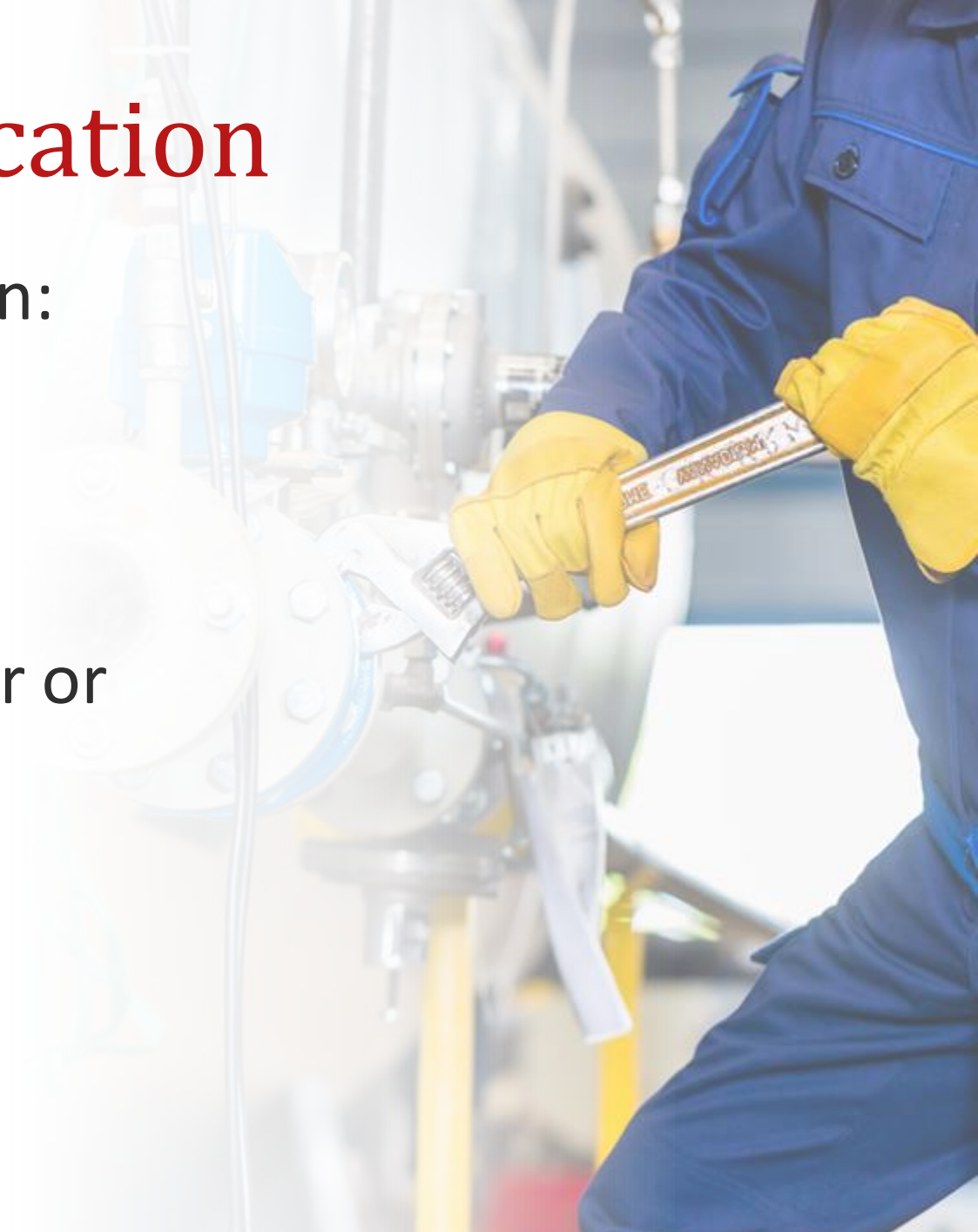
Improved Work Order Prioritization

- Viewing work in a single screen to compare:
 - Asset Criticality
 - Due Date
 - WO Priority
- Driving a preventative maintenance first mindset
- Simplified understanding of the production and safety impacts
 - Considerations made for permits that are needed



Optimized Resource Allocation

- Allocate resources effectively based on:
 - Availability
 - Skills
 - Location
- Distribute work evenly to prevent over or under utilization of technicians
- Minimize travel time between jobs

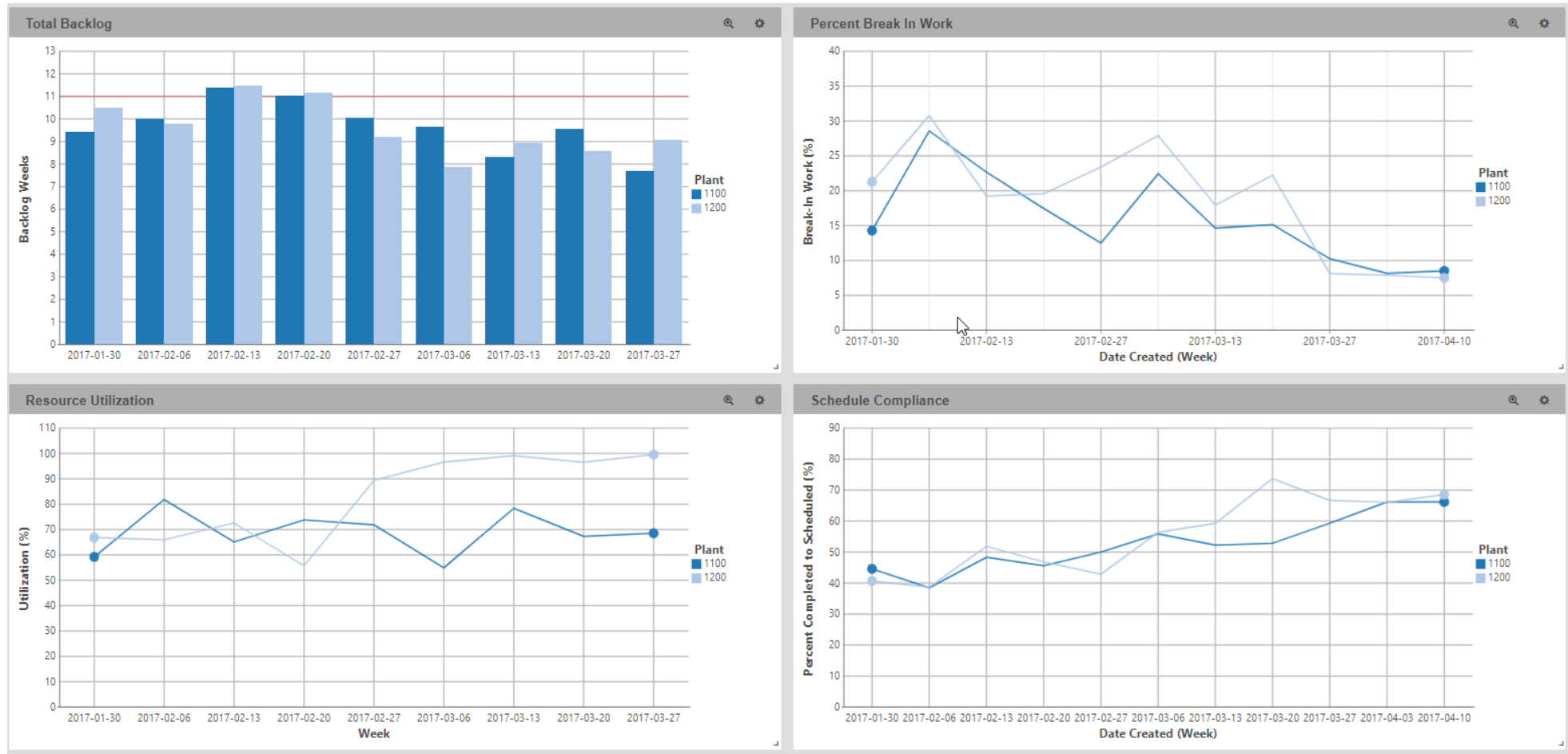


Break-in Work Management

- Instant visibility of how break-in work affects a schedule
- Allows for reprioritization of work in mass
 - Mass Rescheduling
 - Mass Change of Work Order Details
- Reallocate work assignments to ensure Oracle is accurate



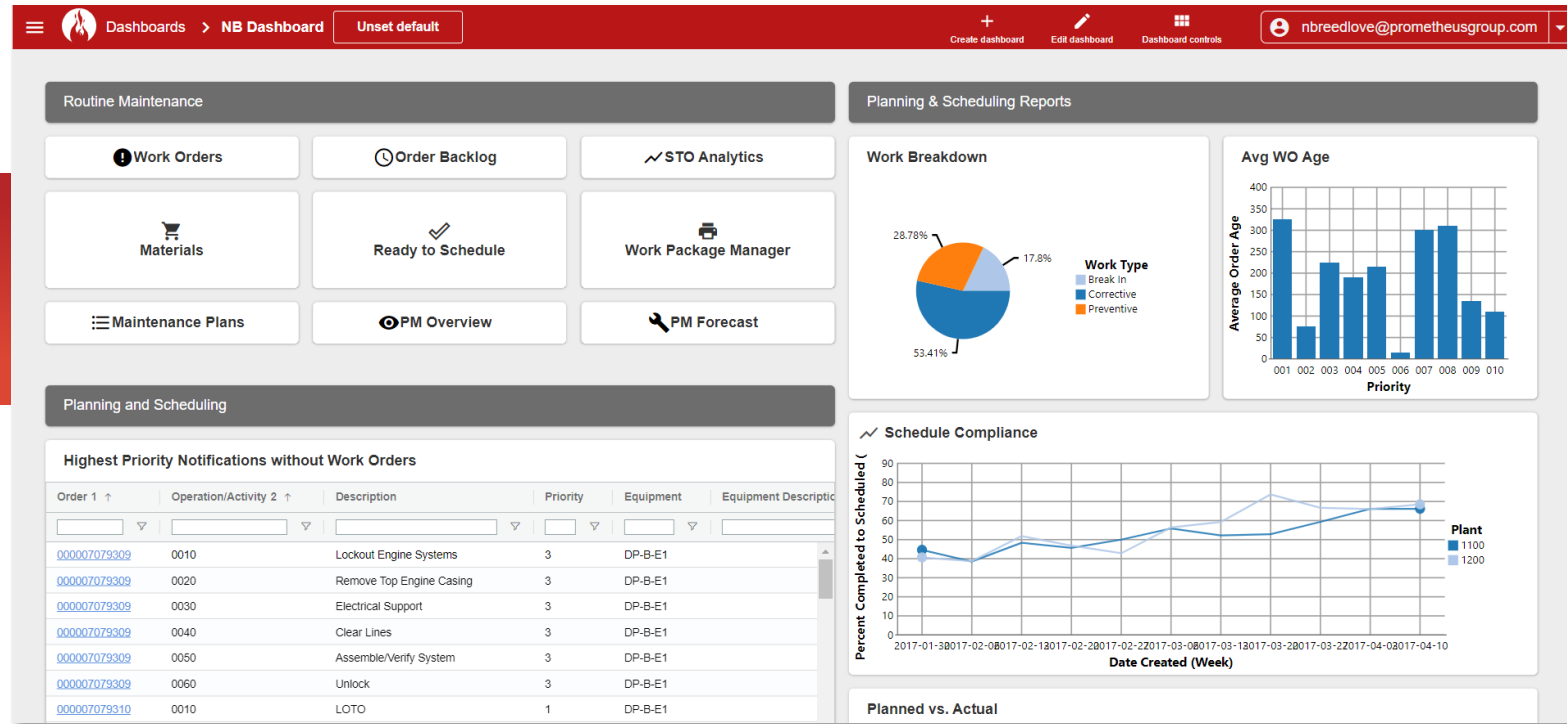
Enhanced Compliance and Reporting



Prometheus Web Scheduler for Oracle



Web Scheduler Suite



Dashboard

Configure your home screen to view high-level details all at once



Graphical Scheduler

Comprehensive planning & scheduling tool in an easy-to-use graphical format



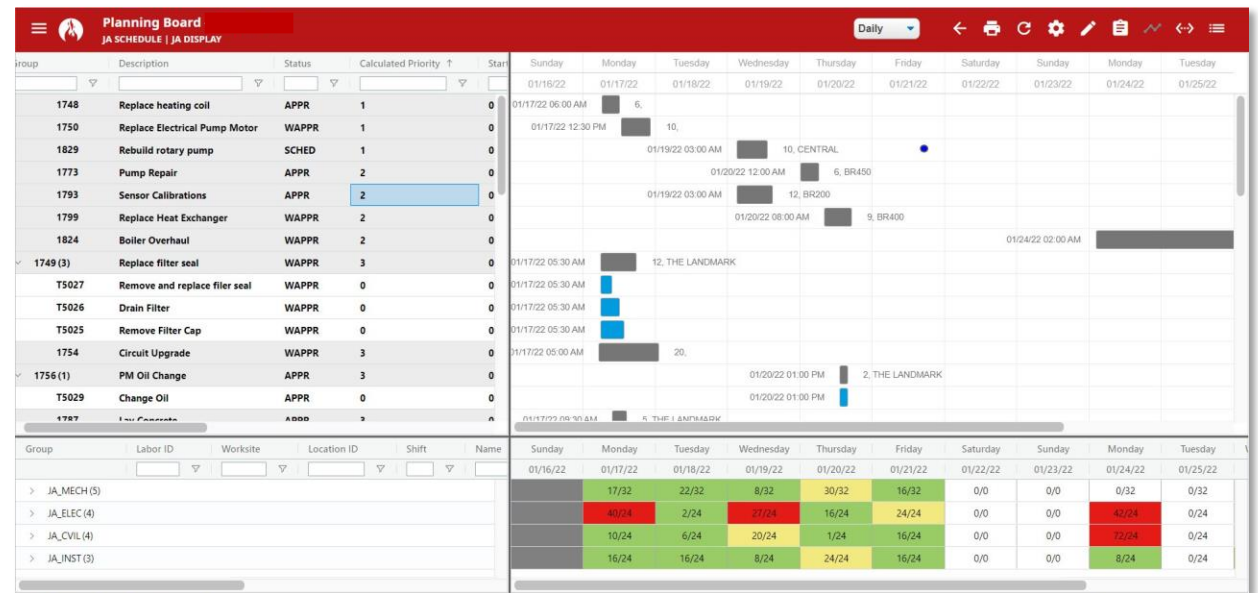
Shift Updater

View labor, craft, and crew calendars. Modify availability with a single click



Scheduler

- Intuitive UI
- Inline editing of data and mass edit control
- Configurable display settings
- Mass assign capabilities
- Split jobs based on availability
- View data constraints



Shift Updater

- Streamlines user input of exceptions (e.g. vacation, sick, work, extra time)
- Allows visual overview of shifts, shift patterns, and exceptions
- Apply to many users at once
- Directly impacts scheduler availability

The screenshot displays the 'Shift Updater' application interface. At the top, there is a navigation bar with a menu icon, the title 'Shift Updater', and standard window controls. Below this is a toolbar with a 'Saved Query' dropdown, a 'Date Range' selector set to '01/17/22' to '01/27/22', a 'Work Site' dropdown set to 'BEDFORD', and a 'Craft' dropdown. A 'LAUNCH' button is located on the far right of the toolbar.

The main content area is divided into two sections: 'Resources' on the left and 'Work Hours' on the right. The 'Resources' section is a table with columns for Group, Labor ID, Worksite, Location ID, Shift, Name, and Craft. It lists several employees, including those in the 'ELECT' and 'CARP' groups. The 'Work Hours' section is a calendar grid for January 2022, with columns for days of the week (Mo 17 to Th 27) and rows for dates. The grid shows work hours for each employee, with colored cells indicating shifts or exceptions. For example, Mike Wilson (ELECT) has a yellow cell on Jan 19 and 20, and a green cell on Jan 24. The 'LAUNCH' button is also visible in the top right corner of the application window.



Demonstration



Thank You!

Questions?



PROMETHEUS GROUP | **USER**
17TH ANNUAL
CONFERENCE
NORTH AMERICA

Nick Breedlove – Functional Consultant