



PROMETHEUS GROUP

Back to Basics: Planning & Scheduling With You and SAP

Harry Williams – Functional Consultant

Edwin Orellana – Functional Consultant

April 23, 2024

Agenda

- Introduction to Prometheus Group
- The Prometheus Platform
- What Is Planning & Scheduling?
- Why Is It important?
- The Challenges of Planning & Scheduling
- Bridging the Gap With Planning & Scheduling
- Advantages of Prometheus Planning & Scheduling

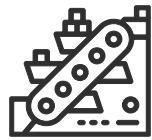
Prometheus Group

- Founded in 1998
- Headquartered in Raleigh, NC, USA
- 13 global offices and 1000+ employees
- Integrated and intuitive software
- Partnerships with industry leading companies



TOP 10

Oil & Gas



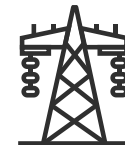
TOP 8

Mining & Metals



TOP 8

Pulp & Paper



TOP 8

Utilities



TOP 6

Chemical



PROMETHEUS GROUP

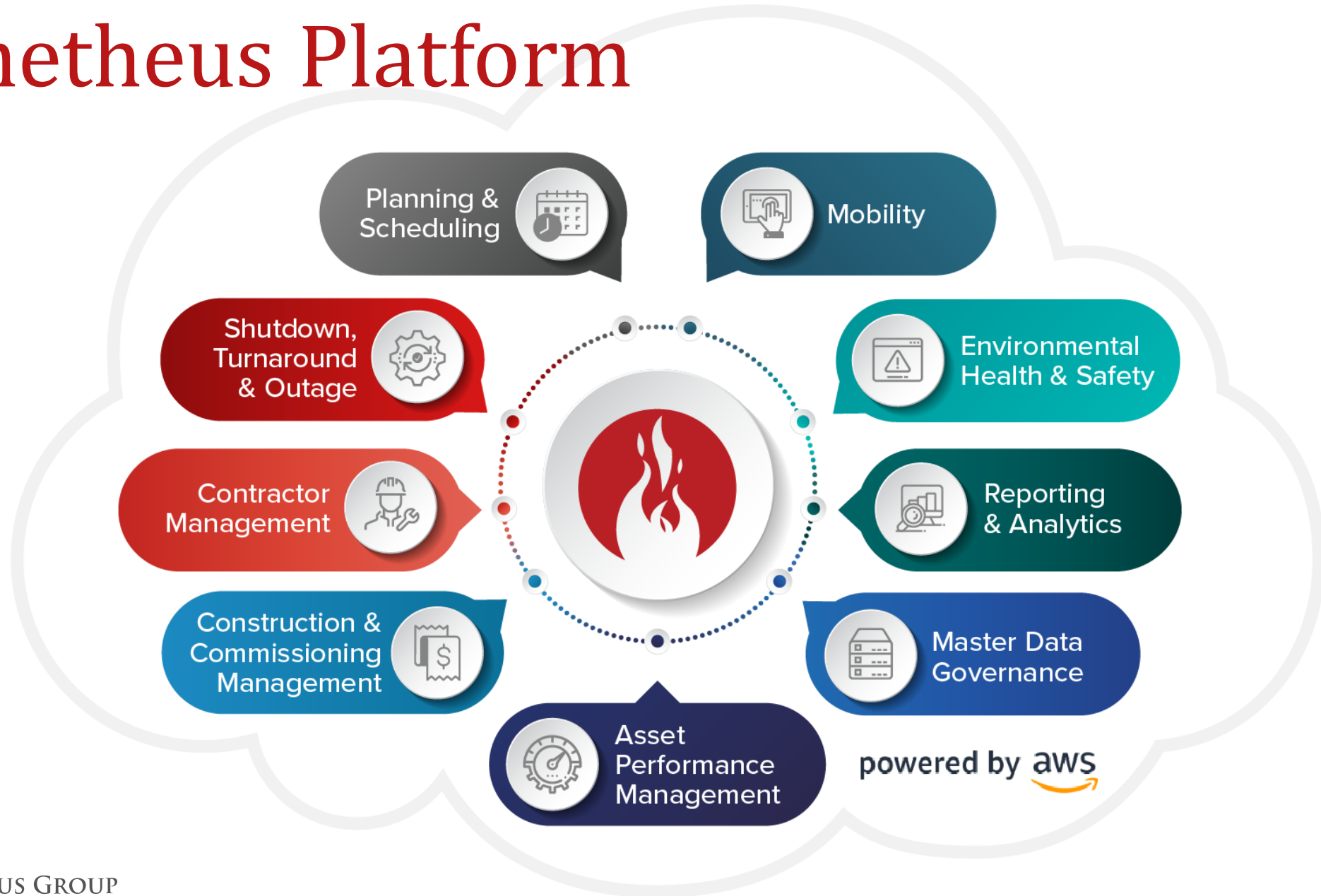
SAP® Certified
Integration with SAP S/4HANA®

ORACLE

Partner



Prometheus Platform



Key Customers



What is Planning and Scheduling?

- **Planning**

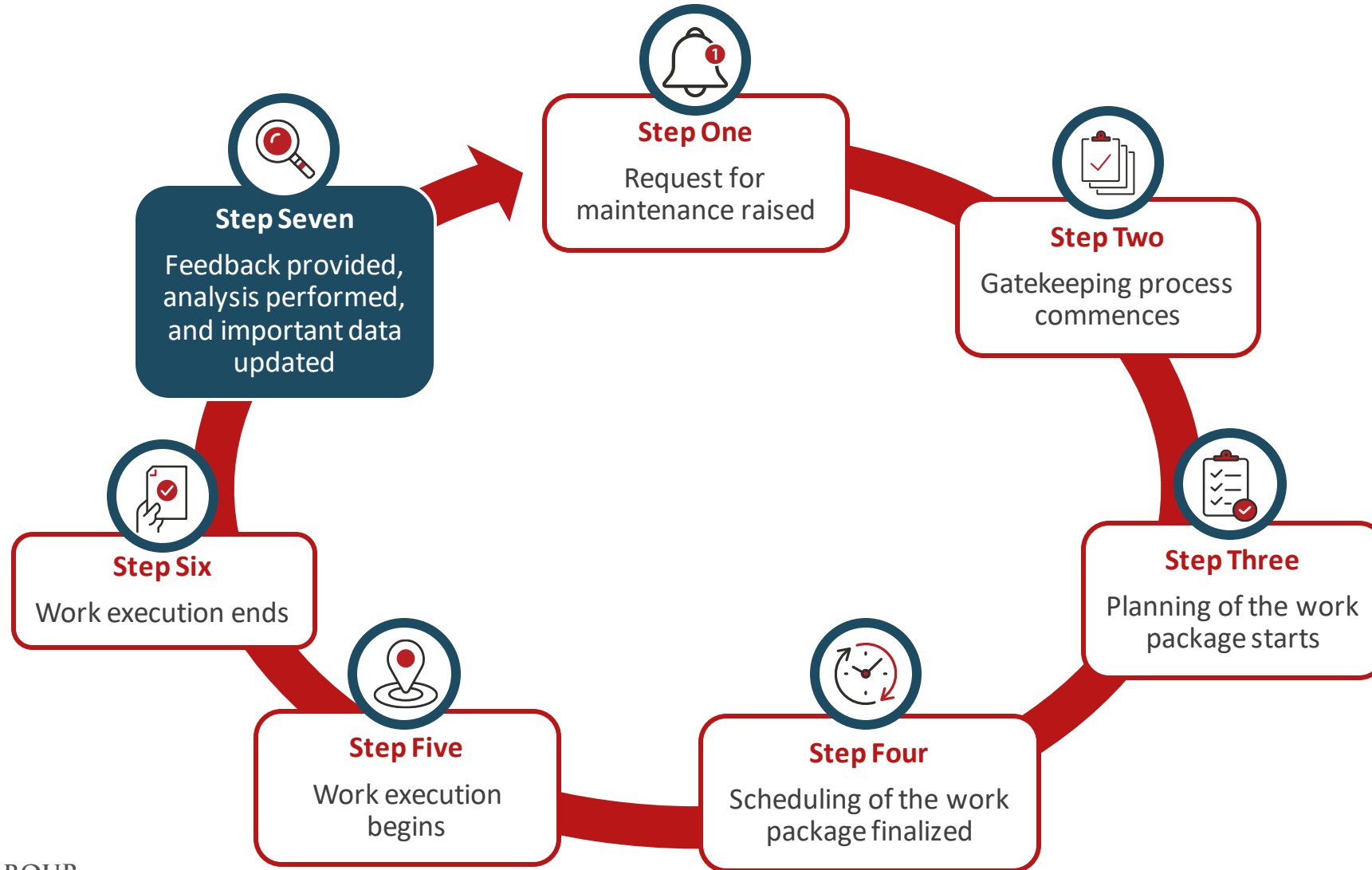
- Identifying how to fix the fault – the “what”
- Allocating work duration – the “how long”
- Getting necessary tools and materials – the “how”

- **Scheduling**

- Finding the right date – the “when”
- Allocating individual resources – the “who”

- If you don't plan accurately, you can't expect the schedule to be executed smoothly

The Planning & Scheduling Process



The Importance of P&S

- Ensure productivity of the workforce (increasing wrench time)
- Increase and optimize asset uptime
- Reduce injuries and incidents
- Increase production
- Reduce cost expenditure and increase profit
- Reduce headaches caused by conflicting schedules



The Challenges of P&S in SAP

- Lack of scheduling functionality
- Low visibility of workforce and material availability
- Flawed communication between maintenance and operations
- Challenges understanding work priorities (decision making and action planning)
- SAP is difficult to learn and train on
- Data housed in multiple areas

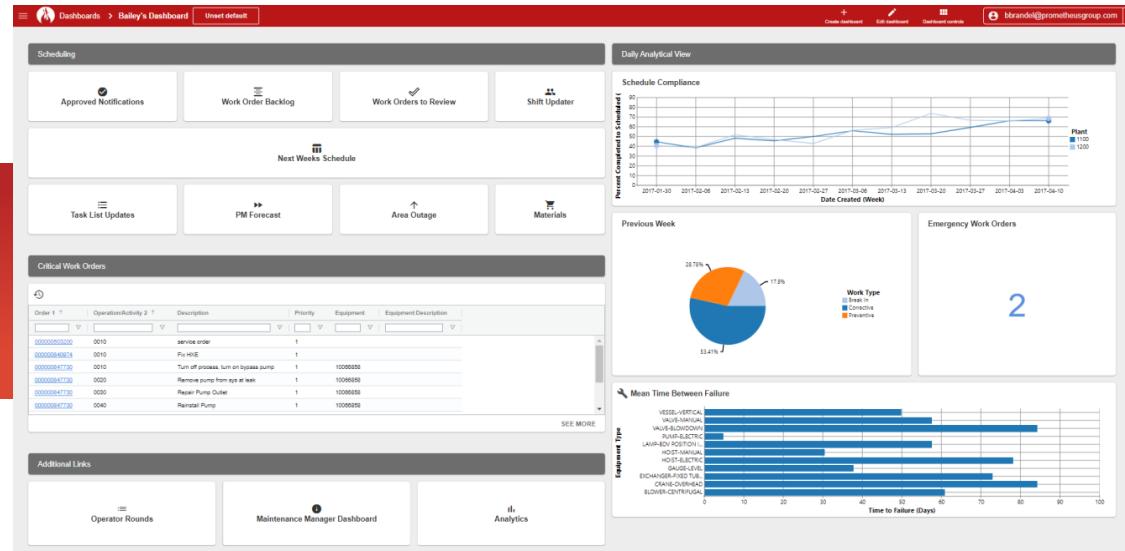


Overcoming Challenges of P&S

- Increase visualization of resources
- Standardize workflow for everyone on the team
- Ensure changes make its way back to SAP
- Digitize current paper process
 - Work identification
 - Permits and Inspections
- Use of existing master data
 - Task Lists
 - Bill of Materials



Bridging the Gap with Prometheus Group



Dashboard

Easily standardize your process with a custom layout for all roles.



Order Planner

View and plan work orders in a simplified view and access planning enhancements.



O2TL & O2BOM

Streamline work orders by copying information to task lists and BOMs to use in the future.



Graphical Scheduler

Schedule all work directly inside of SAP with real-time capacity data and carry out mass changes.



Work Package Manager

Collate all required documents in order to complete a work order.



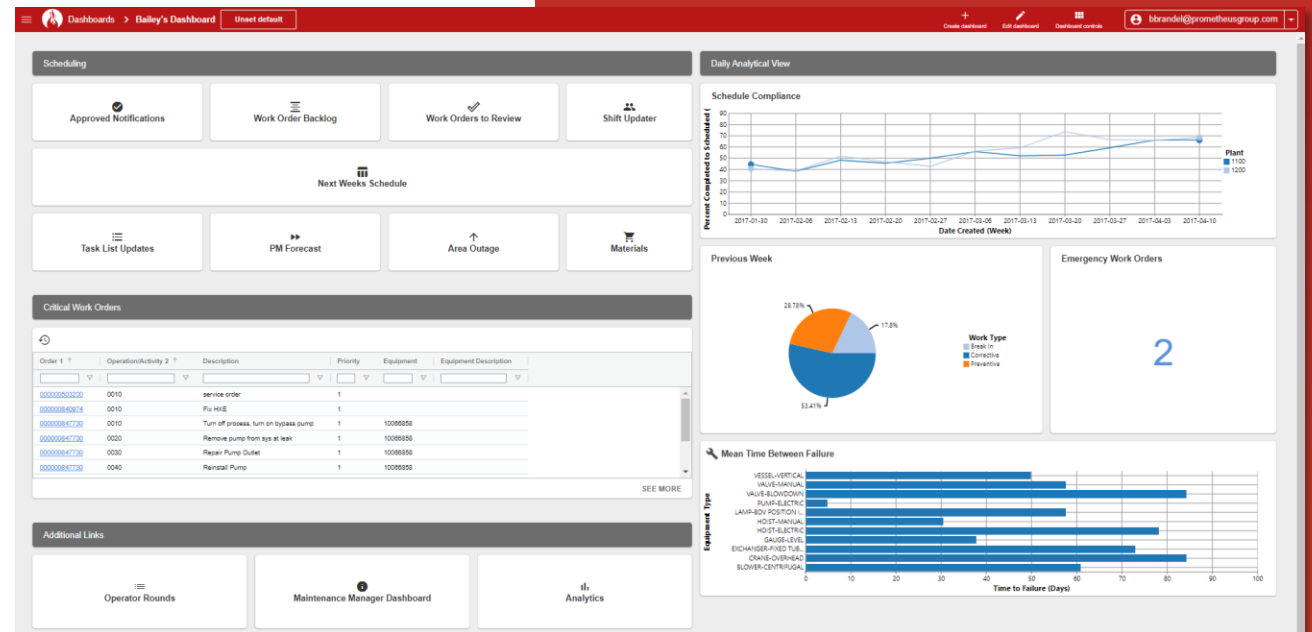
Material Shopping Cart

Search for materials with a multi-word search to ensure the right materials are added.



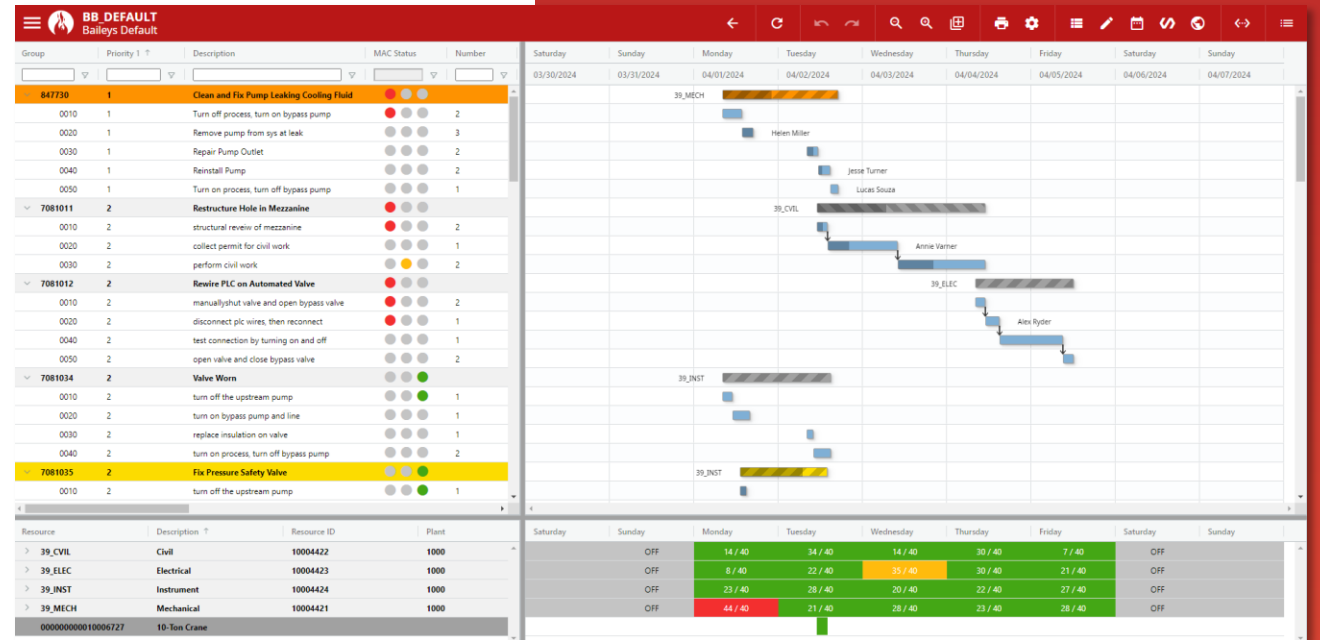
Prometheus Dashboard

- Configurable dashboard per user or role
- Tight integration with all Prometheus modules
- Visibility of live data
- Single click access to most frequently used transaction codes, variants and apps



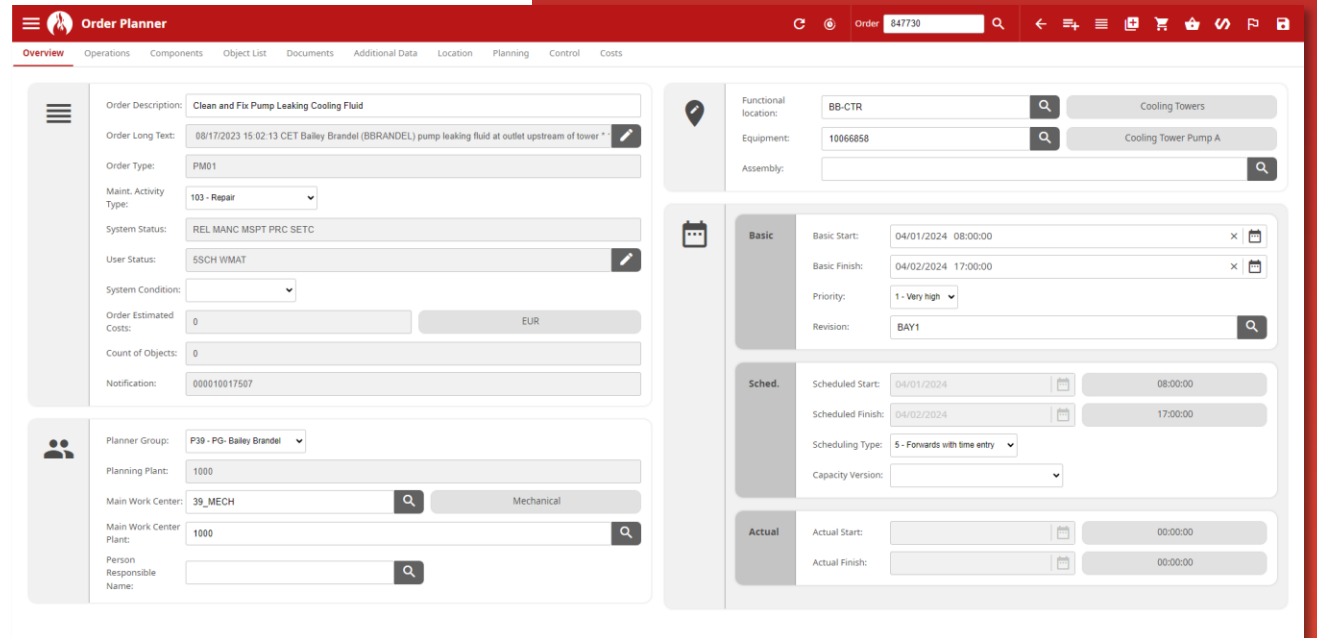
Graphical Scheduler

- Live, real-time updates with SAP
- Configurable display settings, layouts and variants
- Drag & Drop capabilities
- Clear capacity utilisation overview
- Absenteeism and overtime management
- Relationships management
- Mass change functionality



Order Planner

- Configurable replacement of IW32
- Add operations, durations, resources
- Enhanced material search capabilities
- Reuse critical planning data next time through O2TL and O2BOM
- View and print all documentation associated with the work order



The screenshot displays the 'Order Planner' software interface. The top navigation bar includes 'Overview', 'Operations', 'Components', 'Object List', 'Documents', 'Additional Data', 'Location', 'Planning', 'Control', and 'Costs'. The main content area is divided into several sections:

- Order Description:** Clean and Fix Pump Leaking Cooling Fluid
- Order Long Text:** 08/17/2023 15:02:13 CET Bailey Brandel (BBRANDEL) pump leaking fluid at outlet upstream of tower
- Order Type:** PM01
- Maint. Activity Type:** 103 - Repair
- System Status:** REL MANC MSPT PRC SETC
- User Status:** SSCH WMAT
- System Condition:** (Dropdown menu)
- Order Estimated Costs:** 0 EUR
- Count of Objects:** 0
- Notification:** 000010017507

Below the order details, there are fields for:

- Planner Group:** P39 - PG- Bailey Brandel
- Planning Plant:** 1000
- Main Work Center:** 39_MECH (Mechanical)
- Main Work Center Plant:** 1000
- Person Responsible Name:** (Searchable field)

On the right side, there are search and selection fields for:

- Functional location:** BB-CTR (Cooling Towers)
- Equipment:** 10066858 (Cooling Tower Pump A)
- Assembly:** (Searchable field)

Below these are scheduling and actual data sections:

- Basic:** Basic Start: 04/01/2024 08:00:00, Basic Finish: 04/02/2024 17:00:00, Priority: 1 - Very high, Revision: BAY1
- Sched.:** Scheduled Start: 04/01/2024 08:00:00, Scheduled Finish: 04/02/2024 17:00:00, Scheduling Type: 5 - Forwards with time entry, Capacity Version: (Dropdown menu)
- Actual:** Actual Start: 00:00:00, Actual Finish: 00:00:00

Add-Ons



Material Availability Coordinator (MAC)

- Bridge the gap between maintenance, procurement, and the warehouse by aggregating the status of all materials and automatically apply status updates.



Shutdowns, Turnarounds & Outages (STO)

- Schedule shutdowns, turnarounds, outages, and other capital projects directly into SAP and onto one scheduling board using advanced scheduling add-ons.



Extended Functionality (XF)

- Take scheduling to the next level with simulation mode, real-time reports, work progression, and progress tracking.



Preventive Maintenance Manager (PMM)

- Make better decisions around scheduling by migrating preventive maintenance plans and routine maintenance work orders onto one scheduling board.

Advantages of Prometheus P&S

- Unified and enhanced user interface across the Prometheus Platform
- Enhanced visibility of schedule, materials, and resources.
- Increased productivity and wrench time
- Increased schedule compliance
- Single source of truth (SAP) maintained
- Accurate and reliable data for future use (i.e., task lists, BOMs)



Thank You!

Questions?



PROMETHEUS GROUP