

MAS 8 and Going Mobile With Maximo

Jonathan Addison – Senior Functional Consultant

Roger Vallee – Professional Services Manager



PROMETHEUS GROUP

Agenda

- Considerations with moving to MAS 8
- Impacts on current solutions and choices for the future
- How Prometheus Mobile for Maximo aligns with MAS 8
- A preview of the latest and greatest in Prometheus Mobile for Maximo

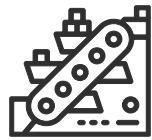
Prometheus Group

- Founded in 1998
- Headquartered in Raleigh, NC, USA
- 21 global offices
- Integrated and intuitive software
- Partnerships with industry leading companies



TOP 10

Oil & Gas



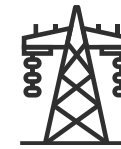
TOP 8

Mining & Metals



TOP 8

Pulp & Paper



TOP 8

Utilities



TOP 6

Chemical



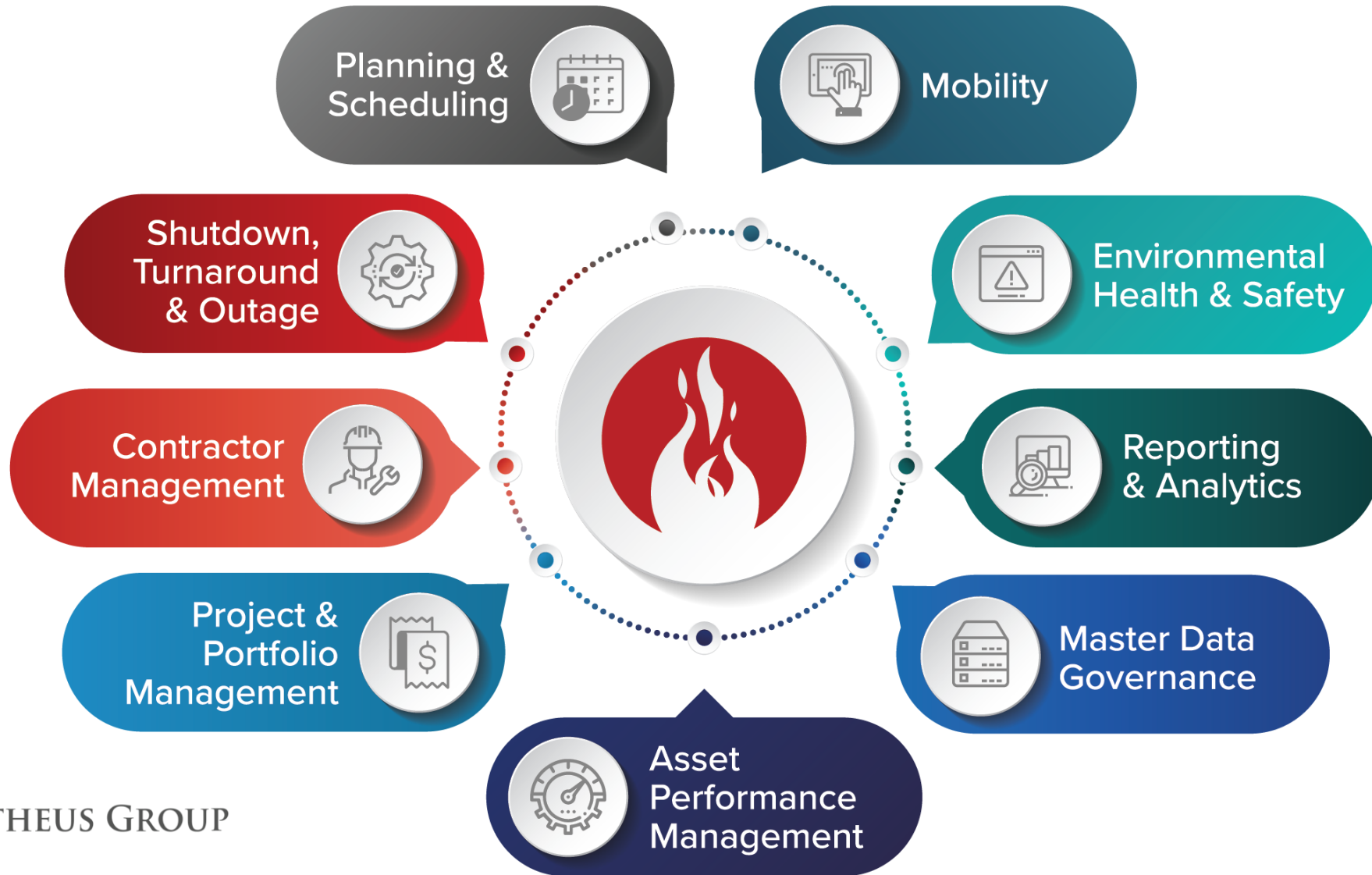
PROMETHEUS GROUP

SAP® Certified
Integration with SAP S/4HANA®

ORACLE® Gold Partner



The Prometheus Platform

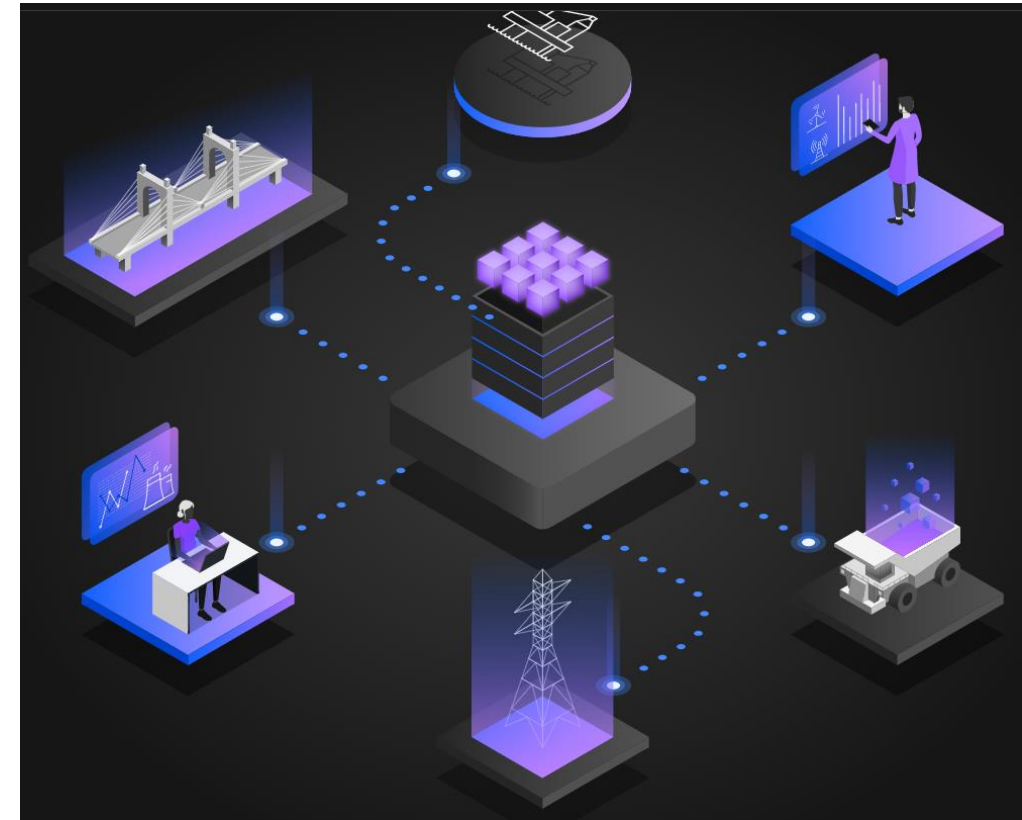


Key Customers



Considerations with Moving to MAS 8

- "IBM Maximo® Application Suite (MAS) is a set of applications for asset monitoring, management, predictive maintenance and reliability planning."
- Architecture Change – Going from IBM Websphere to Red Hat OpenShift.
- Technology change helps reduced downtime
- IBM is dropping support for RMI communication which is the foundation for most 3rd party applications with Maximo 7.x.
- App modifications/customizations will transfer with upgrade



Here Are the Impacts and Considerations

- Mobile applications have a learning curve for end users
- Most Maximo mobile applications leverage only Maximo Security
- Lightweight application
- True disconnected mode



PG Mobile for Maximo Overview

- Work Order Management
- Inventory Management
- Asset Management
- Inspections/Forms
- GIS Integration
- APM Integration



PROMETHEUS GROUP



PG Advantages

- True Operator Rounds
- Forms (not dependent on Maximo)
- APM/Engineering Integration
- Leverage Maximo Security and we have independent security
- Does not sit on Maximo Server



PROMETHEUS GROUP



PG Solutions and MAS 8

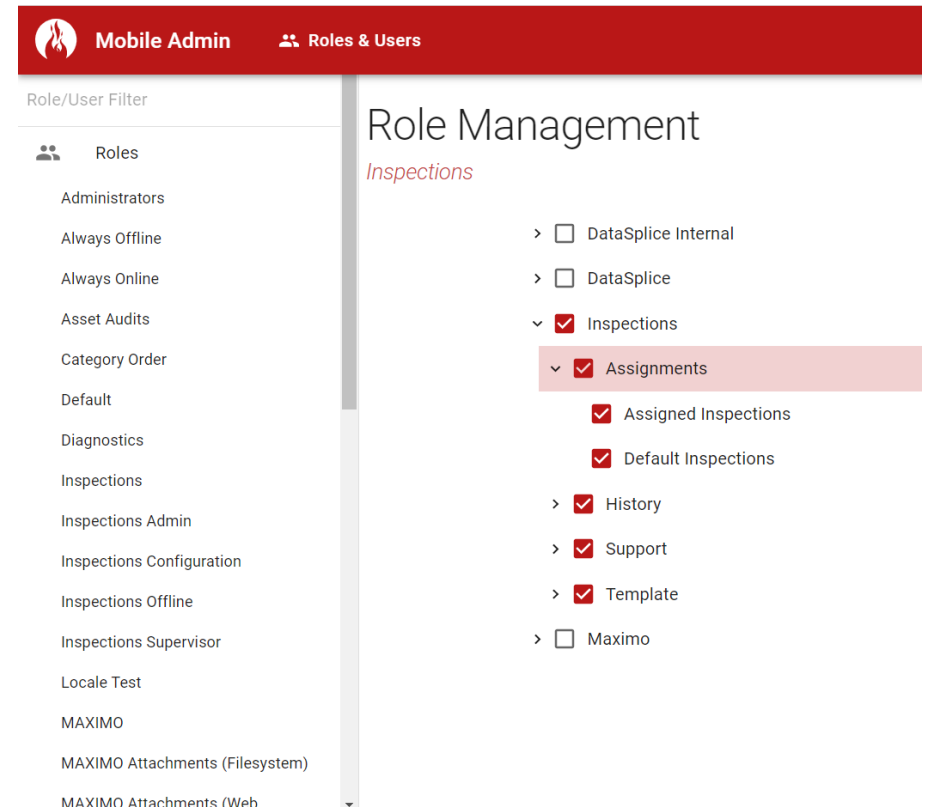
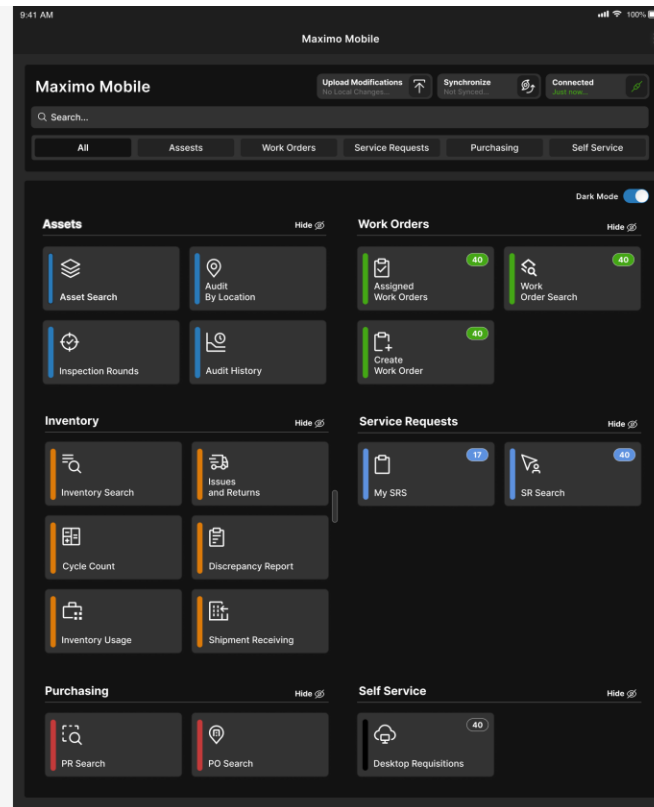
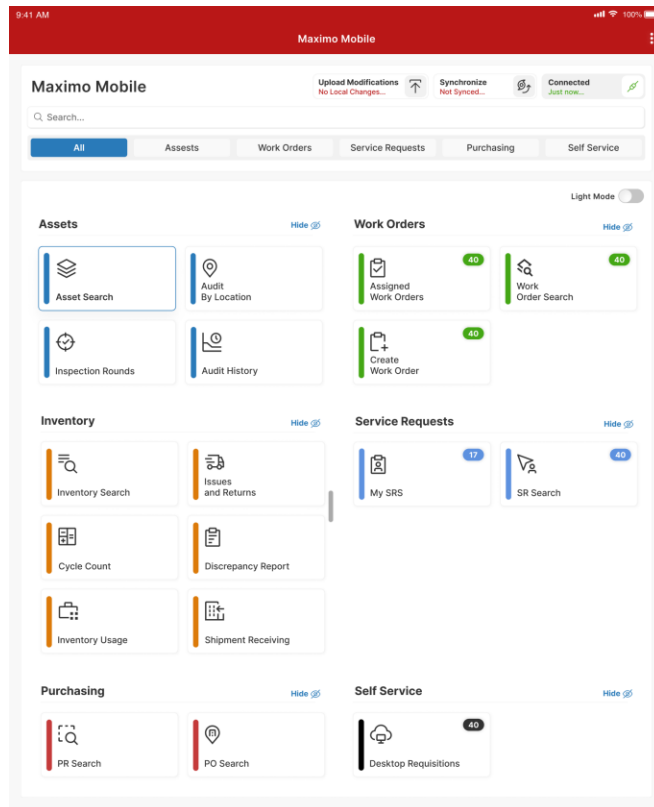
- Prometheus Mobile for Maximo solution will maintain all standard functionality while incorporating additional MAS 8 API support.
- Future includes AI integration in-line with MAS 8
- Continued support existing clients with Maximo 7.x with RMI
- Our mobile solution has been developed a switch to use RMI or API code



PROMETHEUS GROUP



UI/UX Enhancements with Prometheus



Demo



PROMETHEUS GROUP

Questions?



PROMETHEUS GROUP

Thank You



PROMETHEUS GROUP