



PROMETHEUS GROUP

Prometheus Web Planning and Scheduling

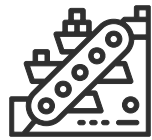
Prometheus Group

- Founded in 1998
- Headquartered in Raleigh, NC, USA
- 21 global offices
- Integrated and intuitive software
- Partnerships with industry leading companies



TOP 10

Oil & Gas



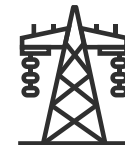
TOP 8

Mining & Metals



TOP 8

Pulp & Paper



TOP 8

Utilities



TOP 6

Chemical



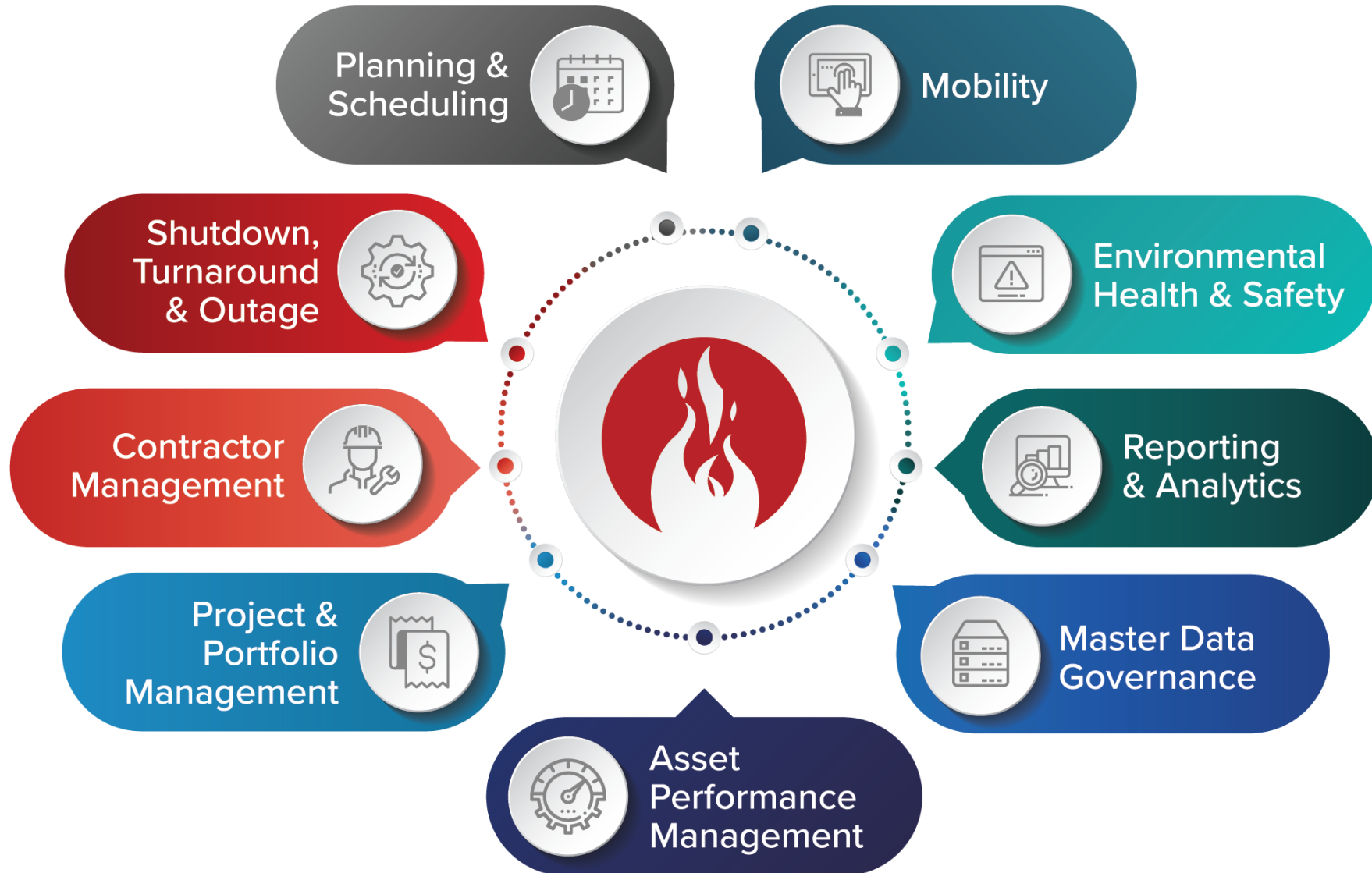
PROMETHEUS GROUP

SAP® Certified
Integration with SAP S/4HANA®

ORACLE® Gold Partner



The Prometheus Platform



Key customers

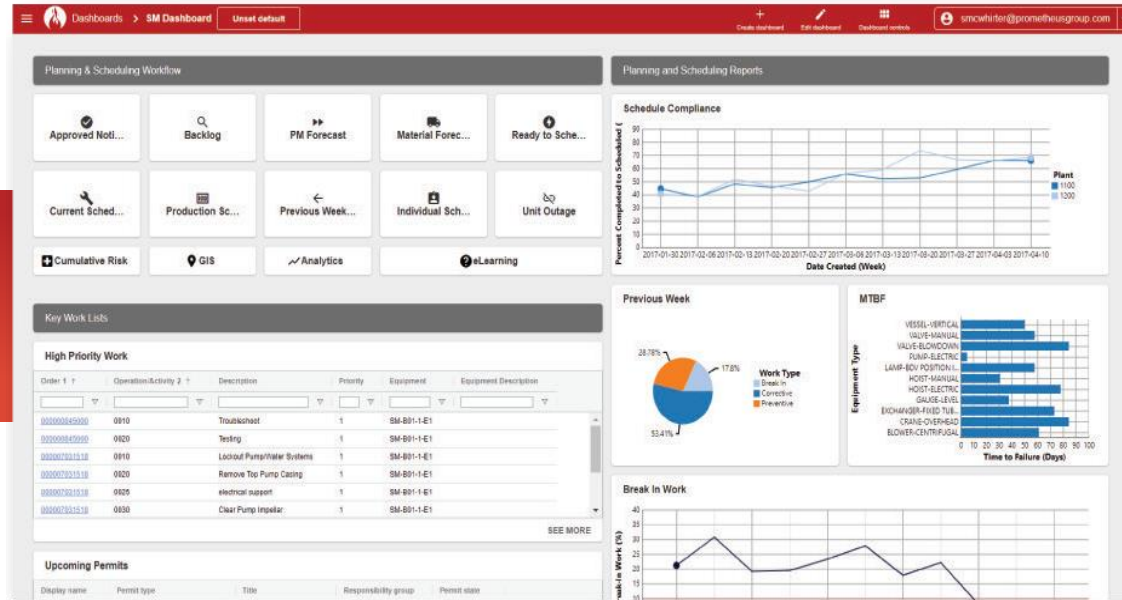


Overview

The Prometheus Planning & Scheduling module in the Prometheus Platform provides a web-based planning and scheduling solution for routine maintenance management. It builds on the decades of experience and best practices as the leading Planning and Scheduling solution for SAP.

- ✓ An out-of-the-box solution that streamlines maintenance processes and improves execution
- ✓ Live SAP Integration for ECC and S/4HANA
- ✓ Configurability to industry and process needs (no forced path in SAP)
- ✓ Scalability to PMs, Materials, PS, Production, and more!

Planning & Scheduling



Dashboard

Easily standardize your process with a custom layout for all roles



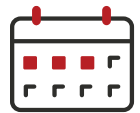
Order Planner

View and plan work orders in a simplified view and access planning enhancements



O2TL & O2BOM

Streamline work orders by copying information to task lists and BOMs to use in the future



Graphical Scheduler

Schedule all work directly inside of SAP with real-time capacity data and carry out mass changes



Work Package Manager

Collate all required documents in order to complete a work order








Material Shopping Cart

Search for materials with a multi-word search to ensure the right materials are added



Prometheus Web Scheduler

Industry has been trending towards web interfaces (S/4HANA, Fiori):

-  ECC and S4 compatible
-  More flexibility and new features
-  Cloud deployment options/lower IT burden
-  UI/UX Uplift
-  Platform Integration



Product Development Approach

Customer-Driven Development

Real world advancements from industry leading organizations

End User Focused

Easy and intuitive UI/UX to drive adoption.

Process Integration

Aligning maintenance and operations and Prometheus Platform solutions

Intelligent Automation

Data driven insights and works to enable process improvements

What's New – Recent Developments

Shift Manager

Temporarily reassign individuals to different shifts

Crew Building

Create crews independent of work centers

GIS Integration

Visualize work and optimize routes

Personnel

Skills/Qualifications Assign based on operation and personnel qualifications

Norms Planning

Create standards for corrective work planning

Production Overlay

Visualize production windows for maintenance scheduling

Configurable Weighted Priority

Create own calculated priority field

Conditional Color Formatting

Highlight work based on any order and operation field



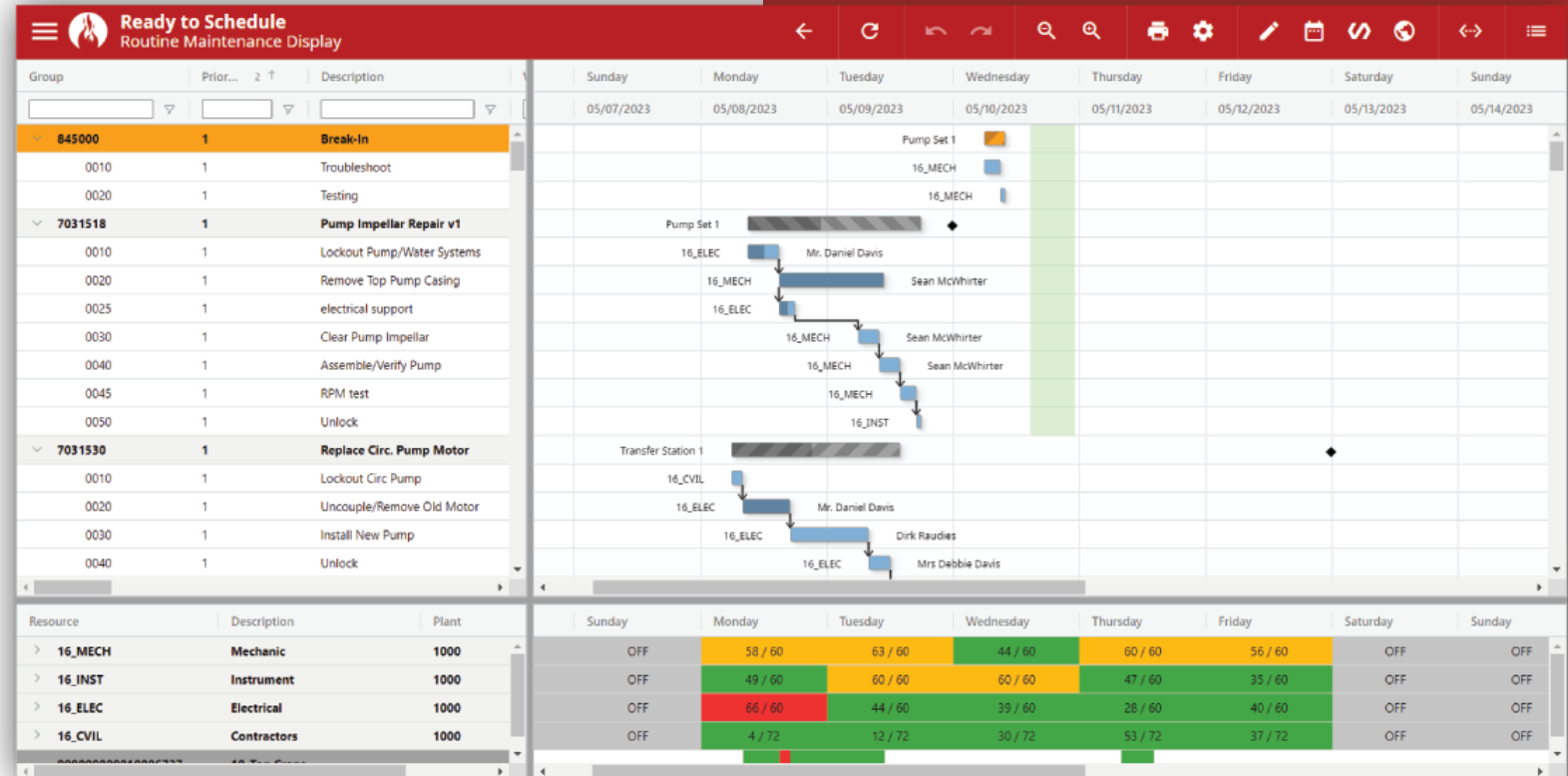
Production Overlay With Maintenance

Visualize production windows for maintenance scheduling

Minimize delays based on equipment availability

Better align maintenance and operations

Complete production scheduler also available.

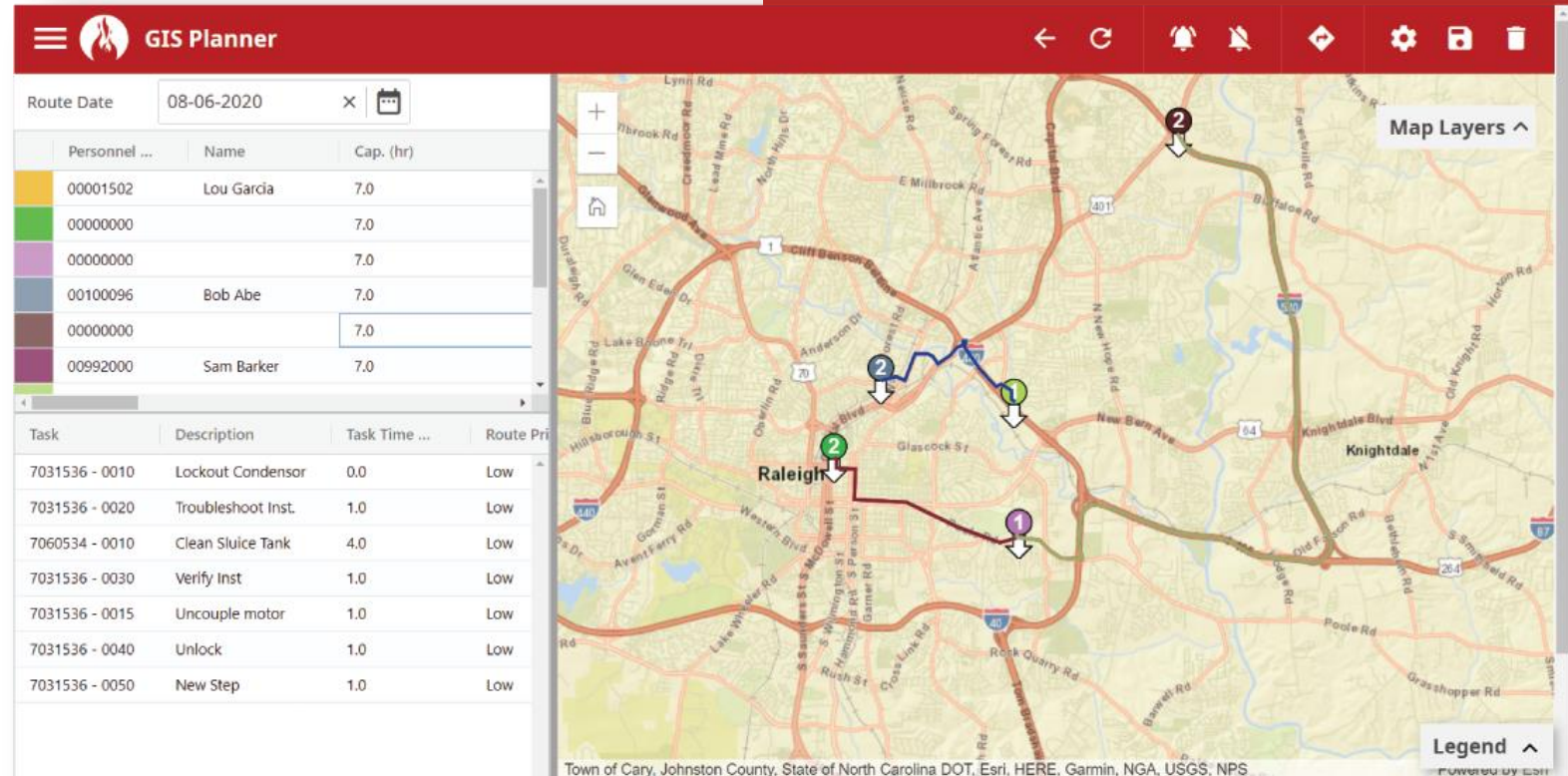


GIS Enhancements

Plan work order routes on a GIS overlay

Optimize Route planning at the work center or resource level

Navigate to jobs via mobile application



The screenshot displays the 'GIS Planner' application interface. The top navigation bar includes a menu icon, the Prometheus Group logo, and the text 'GIS Planner'. Below the navigation bar, there is a 'Route Date' field set to '08-06-2020'. The main interface is divided into two panels: a task list on the left and a map on the right.

Personnel ...	Name	Cap. (hr)
00001502	Lou Garcia	7.0
00000000		7.0
00000000		7.0
00100096	Bob Abe	7.0
00000000		7.0
00992000	Sam Barker	7.0

Task	Description	Task Time ...	Route Pri
7031536 - 0010	Lockout Condensor	0.0	Low
7031536 - 0020	Troubleshoot Inst.	1.0	Low
7060534 - 0010	Clean Sluice Tank	4.0	Low
7031536 - 0030	Verify Inst	1.0	Low
7031536 - 0015	Uncouple motor	1.0	Low
7031536 - 0040	Unlock	1.0	Low
7031536 - 0050	New Step	1.0	Low

The map on the right shows a geographic area with a route planned through it. The route is marked with numbered points (1, 2) and colored lines. The map includes various roads, landmarks, and a legend. The text 'Town of Cary, Johnston County, State of North Carolina DOT, Esri, HERE, Garmin, NGA, USGS; NPS' is visible at the bottom of the map area.

Norms Planning

Norms-based planning applied directly to work order and Task Lists

Standardize planning practices globally

Add Norms to Operation

Search Criteria

Norm Action: Plant Multiplier: Work Center Multiplier:

Norm Name	Norm Action Name	Work	Corrections	Factor
ROV10/16-15	Remove Valve	1.8		1

Norm Name	Description	Work	Active	Norm Action Name
<input checked="" type="checkbox"/> ROV10/16-15	PN10/16 x DN15	1.8	true	Remove Valve
<input type="checkbox"/> ROV10/16-25	PN10/16 x DN25	1.9	true	Remove Valve
<input type="checkbox"/> ROV10/16-400	PN10/16 x DN400	11.6	true	Remove Valve
<input type="checkbox"/> ROV10/16-500	PN10/16 x DN500	15.3	true	Remove Valve

Name	Factor
<input type="checkbox"/> Cloudy	1.2
<input type="checkbox"/> Cloudy	1.2
<input checked="" type="checkbox"/> Hail	1.5
<input type="checkbox"/> Hail	3

Number Of Results: 19 Number Of Results: 10

Shift Manager/Crew Builder



Build shift logic directly in the web suite

Assign shifts to resources and control your entire workforce availability in Prometheus

Create Crews and Individual Resources Entirely Independent of SAP!

Calendar view for shift and exception management

The screenshot displays the 'Shift Updater' web application interface. At the top, there are navigation and filter options including 'Saved Query' (Bedford), 'Date Range' (02/16/23 to 05/31/23), 'Work Site', and 'Craft'. Below these are shift type filters: NIGHT, EVENING, 4-10, W, DAY, and FLOATER. The main interface is divided into two sections: 'Resources' and 'Work Hours'.

The 'Resources' table lists various employees with their details:

Labor ID	Worksite	Location ID	Calendars	Shifts	Name	Craft	Work Group	Supervisor
WILSON	BEDFORD	BEDFORD	DAY	EVENING	Mike Wilson	ELECT		RALMENDAREZ
SCHAFFER	BEDFORD	BEDFORD	DAY	NIGHT	Leonard Schaffer	ELECT		MARCUS
LIBERI	BEDFORD	BEDFORD	DAY	EVENING	Diane Liberi	ELECT		JOEO
SMITH	BEDFORD	BEDFORD	DAY	NIGHT	Rolando Smith	ELECT		PETERM
KELLER	BEDFORD	BEDFORD	DAY	DAY	John Keller	ELECT		AJANOWSG
WINSTON	BEDFORD	BEDFORD	DAY	EVENING	Todd Winston	MECH		REDDING
ROGERS	BEDFORD	BEDFORD	DAY	DAY	Fred Rogers	MECH		RALMENDAREZ
LEE	BEDFORD	BEDFORD	NIGHT	DAY	Mike Lee	ELECT		AJANOWSG
KELLY	BEDFORD	BEDFORD	DAY	DAY	Howard Kelly	MECH		RALMENDAREZ
GORMLEY	BEDFORD	BEDFORD	DAY	DAY	Jim Gormley	ELECT		JADDISON
BALL	BEDFORD	BEDFORD	NIGHT	EVENING	Allan Ball	ELECT		RALMENDAREZ
PEDRICK	BEDFORD	BEDFORD	DAY	DAY	Mike Pedrick	ELECT		JADDISON
KAZMIER	BEDFORD	BEDFORD	DAY	DAY	Tom Kazmier	ELECT		ED
MILLER	BEDFORD	BEDFORD	DAY	EVENING	Steve Miller	SUPR		JOEO
ALLEN	BEDFORD	BEDFORD	DAY	DAY	Rebecca Allen	PIPE		
BALDWIN	BEDFORD	BEDFORD	DAY	14DAYS	Kurt Baldwin	CONSTR		
BARRY	BEDFORD	BEDFORD	DAY	NIGHT	Thomas Barry	MECH		RALMENDAREZ
PORTER	BEDFORD	BEDFORD	DAY	DAY	Andrew Porter	CONSTR		
WINTERS	BEDFORD	BEDFORD	DAY	21DAYS	Chris Winters	CONSTR		
CHANEY	BEDFORD	BEDFORD	DAY	SWING	Larry Chaney	OLM		
CARSON	BEDFORD	BEDFORD	DAY	DAY	Tara Carson	OLM		
CROCKER	BEDFORD	BEDFORD	DAY	DAY	Bob Crocker	OLM		AJANOWSG
LOU	BEDFORD	BEDFORD	DAY	21DAYS	Cindy Lou	CARP		JOEO
JONES	BEDFORD	BEDFORD	DAY	DAY	Frank Jones	OLM		AJANOWSG
GRANGER	BEDFORD	BEDFORD	DAY	WENRNG	Lou Granger	MECH		HUNTER
STANLEY	BEDFORD	BEDFORD	DAY	NIGHT	Fred Stanley	MECH		WILSON
HARDY	FLEET	FLEET	COMPANY1	COMP1	James Hardy	DRIVER		

The 'Work Hours' section shows a calendar grid for February 2023. Each cell in the grid represents a resource's shift assignment for a specific day. The grid is color-coded by shift type: NIGHT (dark blue), EVENING (orange), 4-10 (purple), W (green), DAY (light blue), and FLOATER (yellow). The grid shows various shift assignments across the month, with some resources having multiple shifts on a single day.

APM Optimized Maintenance Planning and Scheduling

PHASE

1

Integrating APM Alerts to Work Requests and Work Orders

Increasing Maintenance and Operations insights and actions from Asset Data

PHASE

2

Shift PM strategies from time based to condition and performance based





PROMETHEUS GROUP

DEMO

Why Prometheus Web P&S

- Live SAP Integration (S/4HANA and ECC)
- Configurable to industry and process needs (no forced path in SAP)
- Vendor with proven maintenance experience and SAP best practices
- Scalability to PMs, Materials, Project Systems, Production, and more!
- Planning & Scheduling Highlights:
 - Production Overlay
 - Tiered Auto-Level and Weighted Priority
 - Norms Planning
 - Crew Builder / Shift Manager
 - GIS Routing

