

A large, stylized, light gray flame graphic is positioned on the left side of the slide, extending from the top to the bottom. It has a circular base with several pointed, flame-like shapes extending upwards and to the right.

Shutdown, Turnaround and Outage Planning: Do You Feel Confident?

Easton Snyder– Functional Consultant
Derek Shickel – Sales Engineer Operations Manager

- Founded in 1998
- Headquartered in Raleigh, NC, USA
- 11 Global Offices
- Integrated and Intuitive Software
- Partnerships with industry leading companies



TOP 6
Oil & Gas



TOP 6
Chemical



TOP 6
Pulp & Paper



TOP 6
Mining & Metals



TOP 6
Utilities

SAP® Certified
Integration with SAP® S/4HANA



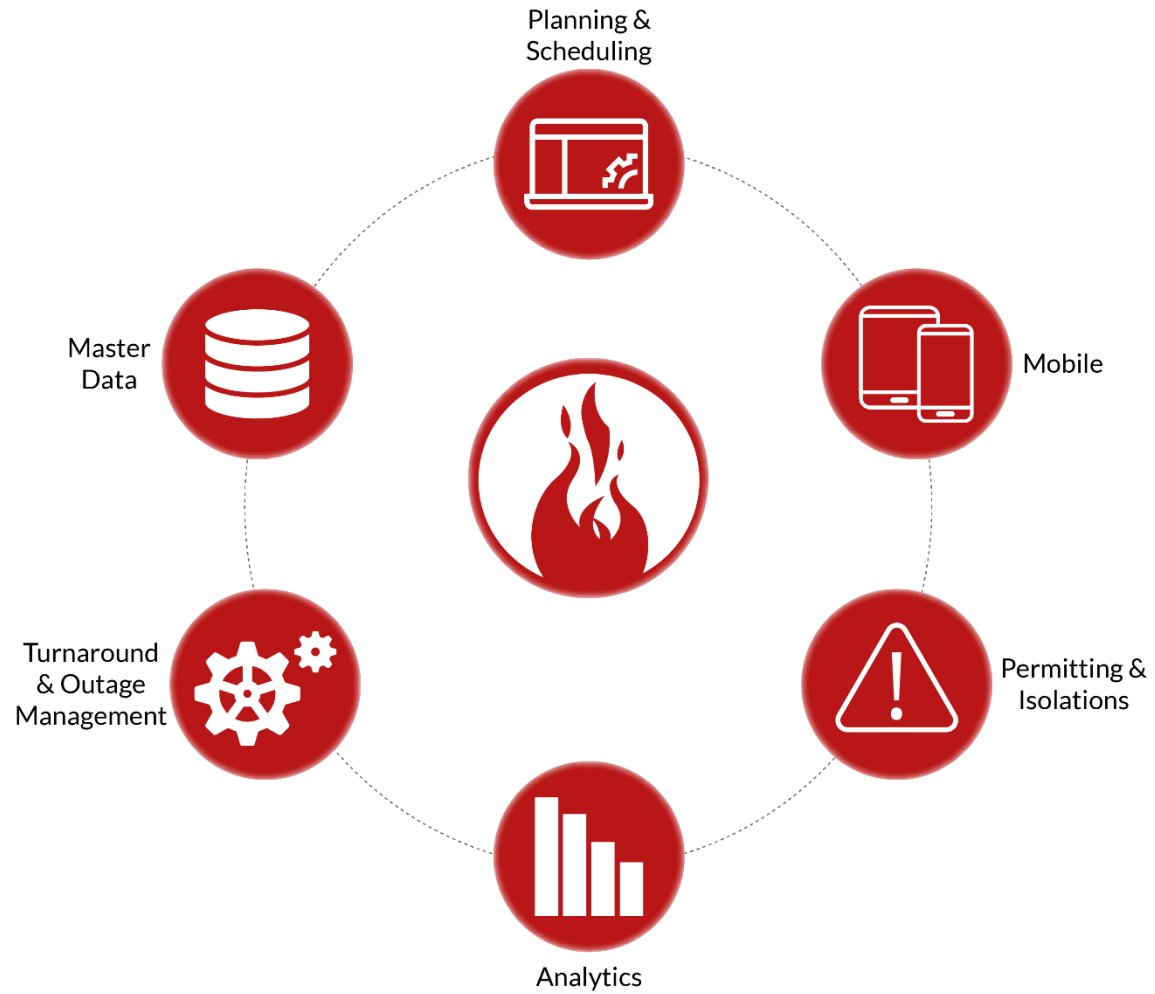
ORACLE® Gold
Partner



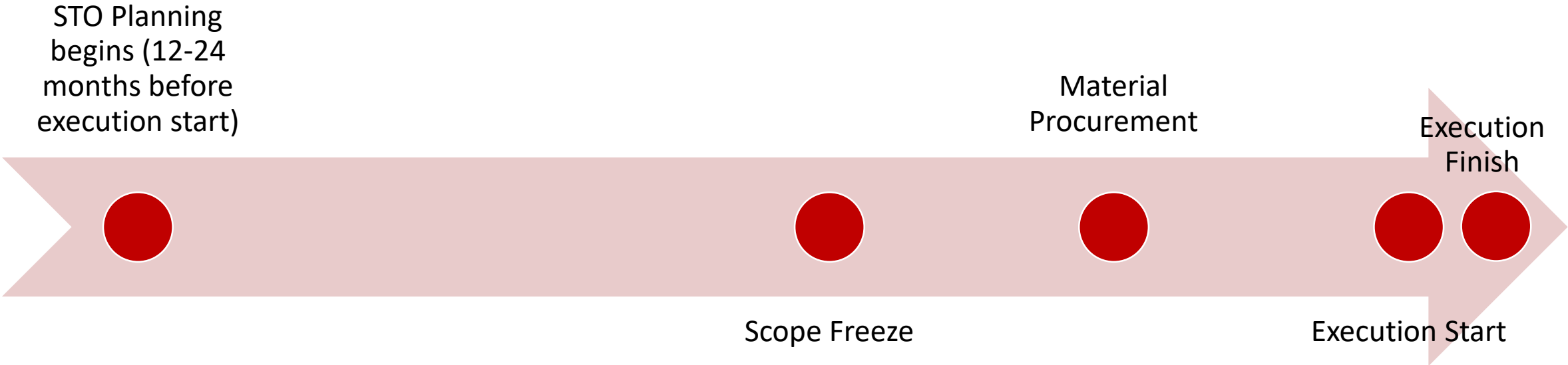
Key Customers



Prometheus Platform



STO Timeline



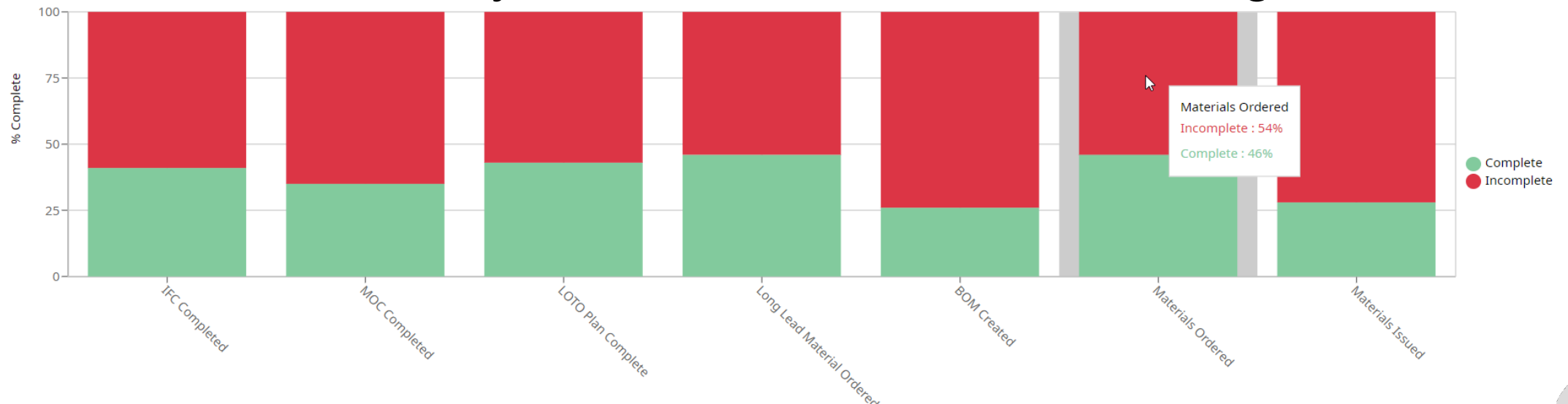
1. Building the scope of your STO

- Scope building needs to be standardized
 - Is scope creation coming from your CMMS?
 - Are contractors providing fixed scope proposals?
- STO scope needs to have the right information including justification and consequence
- Manage scope growth and discovered work during outage execution
- All necessary parties can access scope creation process
 - Challenges with SAP or Maximo access for contractors
- STO scope needs to have the right approval process



2. Track Outage Planning Progress

- Little quantifiable data for Turnaround readiness
 - “Gut feeling” vs. [data-driven](#)
 - “I think we are ready” vs. “I know we are ready”
- Management by exception
- Limited Functionality in CMMS/EAM and scheduling solutions



3. Procure and Track Materials

- Many companies use Primavera to schedule STO's
 - Primavera is not your primary database for materials
- SAP, Maximo or CMMS access for short-term contractors
- No approval process in ERP
- Outage Material Planning is complicated
 - High-dollar parts
 - Long-lead specialty items
- Can plan without access to ERP
- Ten's of thousands of materials for a STO
- Material Availability and Coordination on the web



4. Manage contractor planned and executed work

- Majority of STO work is planned/executed by third-party contractors
 - Contractors need to be able to confirm how much work pre-shutdown work they have completed
- Limited options to restrict contractor access to corporate info
 - Material prices
 - Labor rates
- Management of contractor executed work (Work Packages)





Easton Snyder– Functional Consultant
Derek Shickel – Sales Engineer Operations Manager