



Is Digital Permitting SAFE?

Date: 2 July, 2019

Dani Cook, Functional Consultant
Steven van den Meiracker, Director of Services APAC

Agenda

- Introduction to Prometheus Group
- Prometheus Permitting and Isolations
- Demonstration



Prometheus Group

- Founded in 1998
- Headquartered in Raleigh, NC, USA
- Asset Management Experts
- Integrated and Intuitive Software
- Trusted by the largest asset-intensive companies in the world



TOP 6

Oil & Gas



TOP 6

Chemical



TOP 6

Pulp & Paper



TOP 6

Mining & Metals



TOP 6

Utilities



Key Customers



Customers using ePas solution



alintaenergy



woodside

RioTinto



Fortescue
The New Force in Iron Ore



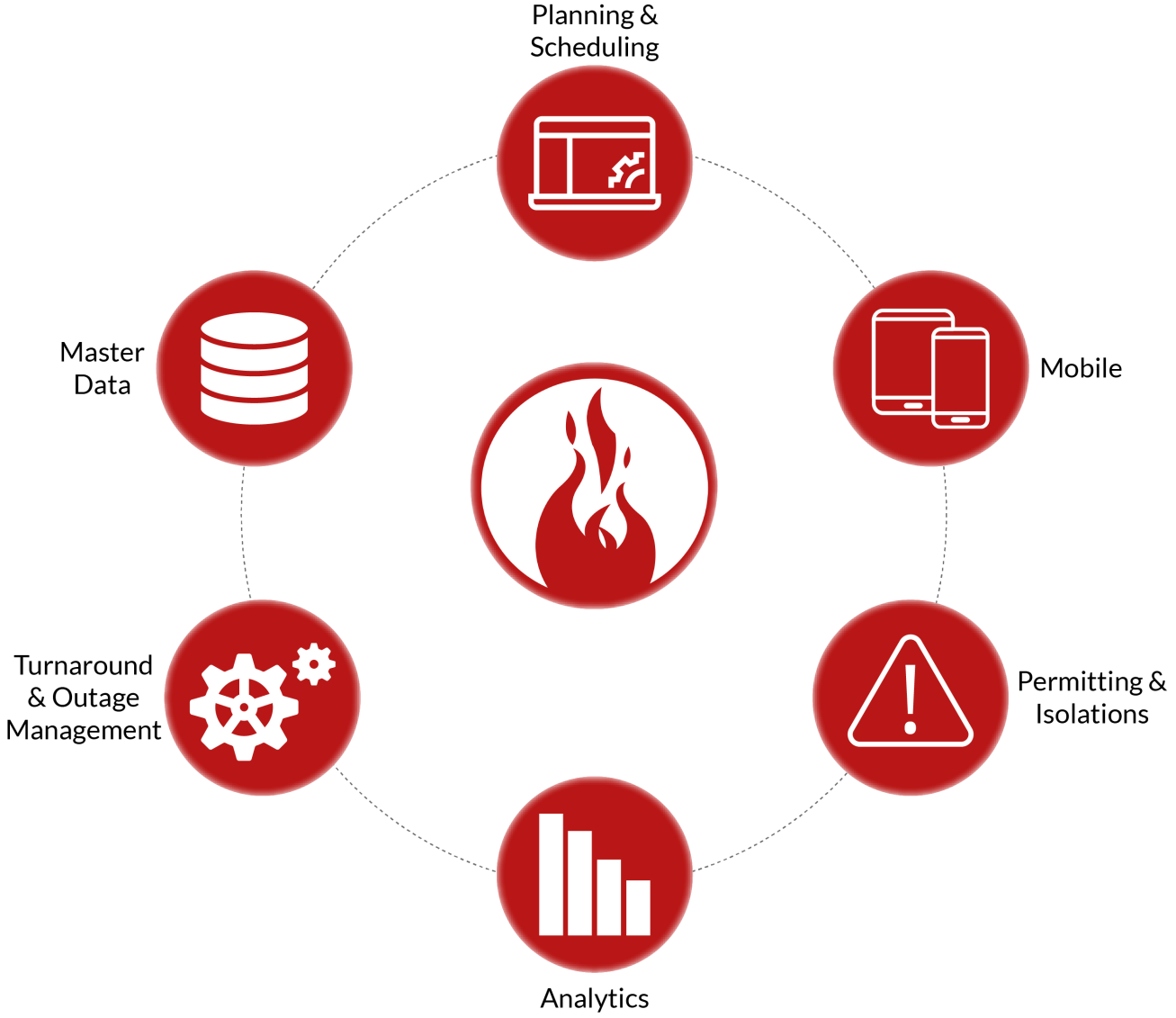
TRONOX



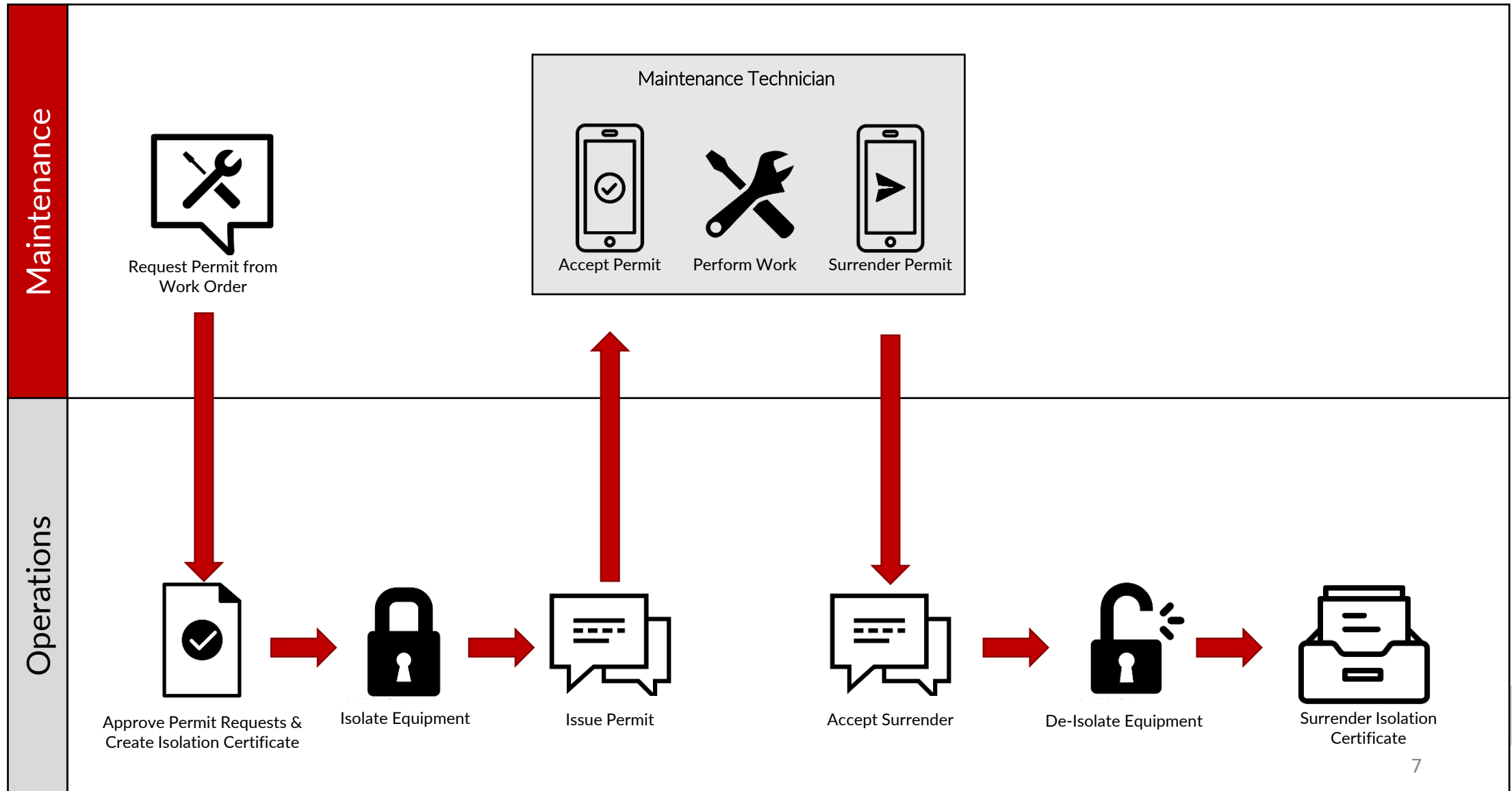
GLENCORE



Prometheus Platform



Prometheus ePAS Workflow



How Can Risk Assessments Affect Permitting?

- Risk assessments are consistently involved with work permitting
- Certain jobs always require a risk assessment in addition to a work permit
- Risk assessments change how the permit should be written
- Review of risk assessments should affect future permits
- Consistency is key, and difficult to achieve on paper



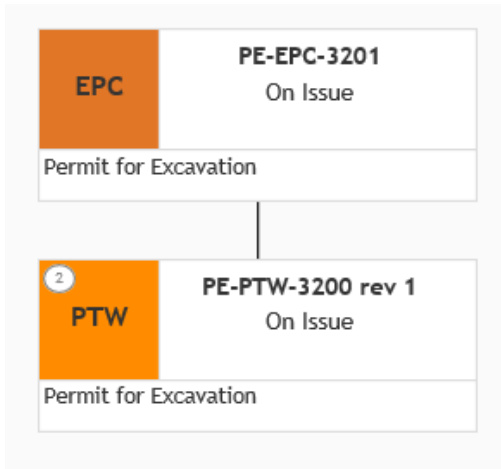
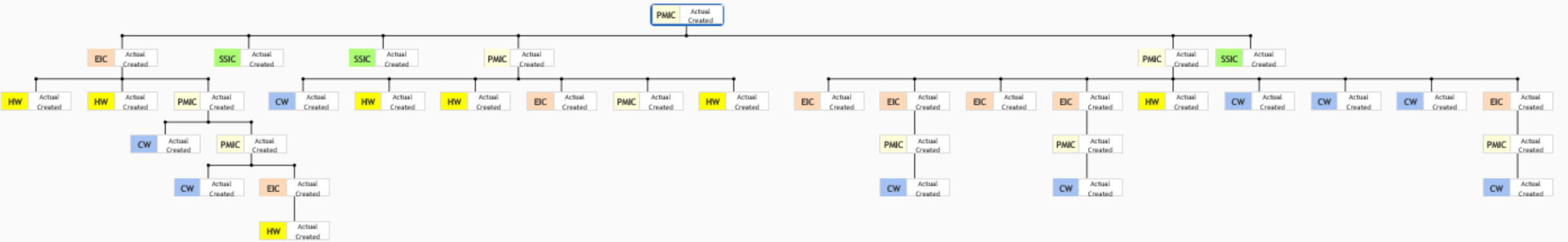
Isolations and LOTO Processes



- Where are Isolation Procedures stored?
- How are they managed?
- What happens when the plant changes?
- What interlocks are in place with work permitting?



Shutdown Templates



Digital Work Permitting is Safer and More Effective

- Visibility of Permits in the system
- HIRA drives the Hazards & Controls
- Faster & Higher Quality Planning
- Robust LOTO management
- Conflict management
- Reusable Templates
- Reduce paperwork & double handling





Questions?